



LOCAL NEWS  
EVENTS  
SUPPLIERS  
SERVICES  
LEISURE  
CLUBS  
ACTIVITIES  
GAMES & PUZZLES

# WOW!

WHAT'S ON IN WING

June 2026

THE RACE  
TO BUILD  
HOUSES IN  
WING!

- The Long Game - your new health feature
- News from the Parish Council
- The plans for a new housing estate on Well Lane
- A summer recipe, horoscopes, farming notes, puzzles, gardening tips and more

Distributed free to every home in Wing. Supported by voluntary donations.



Local Family-Run Business | Established over 25 Years



Proudly serving Leighton Buzzard & surrounding areas

17 Market Square, Leighton Buzzard,  
Bedfordshire, LU7 1EU

“Brilliant service, perfect fitting. Can’t  
thank you guys enough - Highly  
recommended”  
Sarah, Leighton Buzzard



Full Contact:  
[sales@buzzardblinds.co.uk](mailto:sales@buzzardblinds.co.uk)  
[www.buzzardblinds.co.uk](http://www.buzzardblinds.co.uk)  
01525 382444

- Roller blinds • One-touch remote control option
- Conservatory blinds • ‘Perfect fit’ range
- No drilling required with frames
- After-sales service

# STOP WING NEW TOWN action group

Our petition against the proposal to build between 1600 and 2400 houses in Wing is now live, on the website.

**Make your views known!**

Go to

[stopwingnewtown.org.uk](http://stopwingnewtown.org.uk)

PETITION

# WRONG VILLAGE WRONG SITE WRONG PLAN

Praise to our Parish Council for the grass-cutting initiative that they have taken which, together with the excellent hanging baskets, make Wing a much better-looking village once again. The good (and bad) news is that the first cut exposed litter that had been well hidden under the long grass (but it was later collected by our litterpicking volunteers), together with items of heavier metal that damaged the cutting machinery.

A huge welcome this month to Megan Borg-Neal, a Wing resident who will be our new regular monthly health column contributor, retitled by her as *The Long Game*. Megan's first article can be seen on page 25.

Because of the considerable feeling in the village against the proposed housing development on Ascott Estate land south of Leighton Road, together with other discussion, we include this month an article from the Estate Manager in order to give some balance to the debate.



We appreciate the litter-picking work of a number of villagers, who have made a real difference to Wing with their voluntary work. You can join the team, by meeting at the Recreation Ground car park at 10am on the first Saturday of each month for an hour of 'wombling'.

Regards to all our readers from the What's On team.

The current month's issue of *What's On in Wing* can always be found online by using this QR Code,



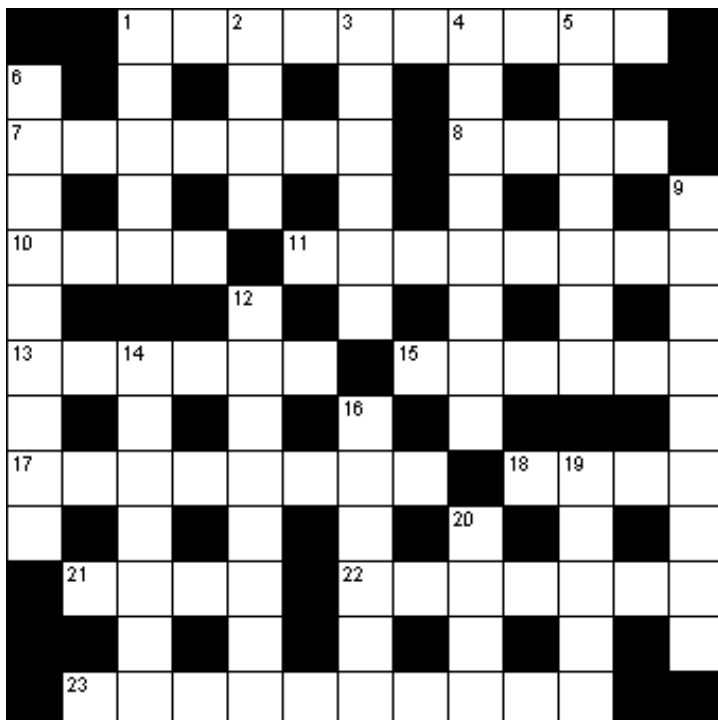
Comments, criticisms and feedback are welcome. Contact us at: [editorial@whatsoninwing.info](mailto:editorial@whatsoninwing.info)

### DEADLINES

If you are an occasional advertiser with WOiW, or are intending to advertise with us, please note that you **must now book your advertising space no later than NOON on 5<sup>th</sup> of the month before publication** (contact Jacqui at [advertising@whatsoninwing.info](mailto:advertising@whatsoninwing.info)). Space will then be held for you. The **absolute deadline** for receiving advertising material and editorial content is NOON on 15<sup>th</sup> of the month preceding publication.

*What's On In Wing is published by What's On Publishing CIC, registered number 14178082*

## Quick crossword



### Across

- 1 Adornment (10)
- 7 French castle (7)
- 8 Large town (4)
- 10 Notion (4)
- 11 Precious metal (8)
- 13 Tantalised, bantered (6)
- 15 Rubber (6)
- 17 Former name of Zimbabwe (8)
- 18 Merriment (4)
- 21 Floating platform (4)
- 22 Stretchy (7)
- 23 Pseudonym (3,2,5)

### Down

- 1 Male duck (5)
- 2 Masticate (4)
- 3 Russian currency unit (6)
- 4 Habitually silent (8)
- 5 Excursions (7)
- 6 Sacred writings (9)
- 9 Sudden crisis (9)
- 12 Despondent (8)
- 14 Savoury pear-shaped fruit (7)
- 16 Surrender (4,2)
- 19 Supple (5)
- 20 Forbidden (4)

Solution  
p32



- ✓ Free quotations, no obligations
- ✓ Emergency Work – day or night
- ✓ Domestic or Commercial
- ✓ A name you can trust

Contact us:

**01442 824 740**

**01582 343 123**

Email: [james@andertonelectrics.co.uk](mailto:james@andertonelectrics.co.uk)

Proud members of  
**Checkatrade.com** See our feedback on Check a trade  
Where reputation matters  
[www.checkatrade.com/andertonelectrics](http://www.checkatrade.com/andertonelectrics)



[www.andertonelectrics.co.uk](http://www.andertonelectrics.co.uk)

Based In Leighton Buzzard

# C&L Web Design

## Local websites that bring you more customers

### Websites that rank on google and generate enquiries



- ✓ Experienced local web designers
- ✓ WCAG 2.2 Accessibility & GDPR Compliant
- ✓ Trusted by businesses near you



SCAN TO LEARN MORE +44 7307 239 633 | [calandlara.webdesign@gmail.com](mailto:calandlara.webdesign@gmail.com)

June Services at All Saints Church, Wing		
7	1000	Holy Communion (Rev'd Dom Wright)
14	1000 1800	Morning Prayer (Lay led) Youth Service (Rev'd Dom Wright)
21	1000	Holy Communion (Rev'd Dom Wright)
28	1000	People's Praise (Lay led)

*From  
The Team  
Vicar*



## Pentecost: Celebrating Diversity Today

**Summer is now upon us, and many of our beautiful villages are hosting a plethora of wonderful events to celebrate: Open gardens, summer fêtes and barbecues, cream teas, garden parties, classic car gatherings, and more. These events draw many visitors to our villages – and how wonderful it is, seeing communities of different people coming together to celebrate as one.**

In the Church, we have recently celebrated the Feast of Pentecost, also known as Whitsun – the coming of the Holy Spirit. In St. John's Gospel, the risen Lord Jesus says to His friends "Peace be with you," and breathing on them, He adds "Receive the Holy Spirit." Soon after, in the earliest days of the Christian Church, the Holy Spirit comes upon the Apostles and the whole Church, famously gifting them with the ability to speak in many different languages.

The Holy Spirit is God's presence and power in the world today, and empowers us with many different gifts. God loves us all, and makes us all in His image and likeness – and with this, He gives us a universal dignity. And at the same time, God makes us all unique, with many differences.

In his First Letter to the Corinthians, St. Paul writes how the same Holy Spirit equips different people with a variety of gifts. We all have our own hobbies, interests, gifts, talents, and callings in life – be it to marriage,

family life, or other vocational roles such as medicine, teaching, farming, caring – perhaps a combination. These things are integral to our identity, making up who we are – and Paul adds that just as the different parts of the human body make up the whole person, so too does each and every person make up the whole community – with everyone being greatly valued.

We are all God's children – and yet, we are all different. I think that is something to be celebrated; it might be a bit boring if we were all the same! And while differences in views and opinions can sometimes be challenging, its part of what makes us human – the diverse people God has lovingly made.

As we come together this summer – whether close to home, or somewhere further afield – may we always do our best to recognise the presence of Christ in the other, and to celebrate the ways God moves us today.

*Rev'd Will Lyon Tupman, Team Vicar*



**A peaceful Country Retreat for your cat in spacious heated farm accommodation.**



Gillian Alexander - Proprietor  
Inspections welcome.  
South Tinkers Hole Farm  
Cublington Rd, Wing, Leighton Buzzard, Beds LU7 0LB  
☎01296 681104 ✉info@alexanderscountrycats.co.uk  
[www.alexanderscountrycats.co.uk](http://www.alexanderscountrycats.co.uk)



**Learn to Dance**

**Absolute Beginners Line Dance**  
11:15am Friday 10<sup>th</sup> July

**Line Dance** – Tuesdays & Fridays

**Ballroom & Latin** - Wednesdays


**Tea Dance** – select Sundays

**at Wing Village Hall**

**50s Jive RnR** – Thursdays at Longueville Hall

**Sara & Adrian Marsh 079-069-88880**  
[info@adrianmarshschoolofdance.com](mailto:info@adrianmarshschoolofdance.com)

**IDTA**



**THE MARIE CURIE  
TEA PARTY**

**Wednesday 24 June**  
**2pm - 4pm**  
**in the Village Hall**

Please come to help us raise funds for Marie Curie Nurses who offer end of life care for all.

A cup of tea/coffee and delicious homemade cake (inc. gluten free) - £3

There will be also be a raffle, bric-a-brac, books and plants for sale.

Professional local and reliable friendly service in Wing and surrounding villages.

Free quotations provided for your home or commercial requirements.

# GLASS MONKEYS WINDOW CLEANING

Please call Simon on  
07980 389 284 or  
01296 682 470

Inside or 'one-off' cleans on request.

All work is fully insured and all quotes include cleaning of the windowsills, too!



A medically led wellness centre



## PILATES

- Matwork Pilates Classes
- Reformer Pilates Classes
- All Run by Chartered Physios
- Clinical courses such as Healthy Hips and Back to Mobility.

## HYDROTHERAPY

- Post op rehabilitation
- Pain Management
- Small Group Clinical sessions
- Specific classes to help speed up recovery after Total Hip and Total Knee replacement.



## PHYSIOTHERAPY

- Rehabilitation
- Sports Physio/ Sports Massage
- Pain management

Cottesloe Physio,  
Cublington Rd,  
Wing,  
Leighton Buzzard,  
LU7 0LB

www.cottesloeophysio.co.uk  
info@cottesloeophysio.co.uk  
01296 326377

# CODEWORD

1	2	3	4	5	6	7	8	9	10	11	12	13
14	15	16	17	18	19	20	21	22	23	24	25	26

	13		25		8		26		5		5		4	
16	18	21	10	25	14		18	5	2	10	7	1	7	15
	7		12		19		16		7		9		3	
5	6	14	15	22	4	22	12		6	18	9	16	22	12
	25		7		18		2		22				23	
25	22	9	9	14	15	1	10		9	7	12	2	10	16
	7		9				6		10		14			
7	23	16	22	20	18	10		3	10	7	23	25	10	6
			4		23		9				8		21	
10	23	11	19	3	10		7	15	4	6	10	9	12	14
	10				23		6		15		12		2	
18	5	17	22	23	25		12	15	7	5	16	6	7	5
	2		23		22		7		23		18		23	
17	10	10	24	10	23	25	9		13	7	6	7	13	10
	17		19		13		3		10		10		10	

# SUDOKU CENTRAL

2	1			3				
			8				2	
			7		4	1		
8		9			3		1	
3		4				6		7
	2		6			9		4
		1	2		7			
	7				6			
				1			6	5

Solution  
p32

*Cublington*  **A GREAT FAMILY DAY OUT**

**SUMMER FETE** *Fun Dog Show*

*Saturday 20th June*  
from 1pm

at Orchard Ground, Cublington LU7 0LR  
**FREE PARKING**

**ALL YOUR TRADITIONAL FAVOURITES**

- BBQ • Bar • Fun DOG show •
- Children's Games • Winslow band •
- Punch & Judy • Blacksmith demo •
- Arts & crafts • Classic Cars • Cream Teas •
- Cakes • Produce • Plants • Raffle •
- Games Galore & much, much more •

**Fun for all the family!**  
£2 entry - kids U12 & 65+ free  
cash & card payments available

## Food for Thought

Ridge and furrow, open arable,  
Sweet meadow, hedge and brook,  
Hear the ploughshare, watch the harrow,  
Children, come take a look.  
Soon you will be sent crow-starving,  
Assisting in the field -  
Bird scaring, living scarecrows all,  
Ensuring a good yield.

Or you might be weeding, wondering  
At all the time it takes -  
No tools, only tiny hands,  
And a bent back that aches.  
Your lessons learned by word of mouth  
Are hard to understand:  
Why do rich Lords take your dad's food  
When he works on the land?

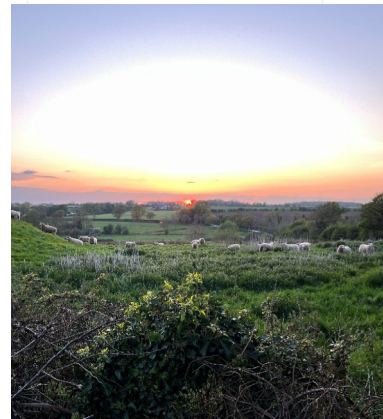
Years roll on - the fields enclosed  
Belong to different men.  
The living's easier for some -  
Sheep fatten in their pen.  
The land remains the same but soon  
The farm has gone away.  
Children go to school to learn what  
The planet needs today.

The land is valued, piece by piece -  
What treasures does it hold?  
Some build the future block by block,  
And reap what they have sold.  
The land remains, this golden vale.  
Politicians make their pledges.  
The children watch the diggers come.  
Bricks supplant the hedges.

(C) Sally 14.5.2026

In Anglo-Saxon times children were sent to 'crow-starve' in the fields, preventing the birds from eating the seed. Crops had to be weeded by hand, and weeds fed to the animals.

Sir Robert Dormer bought grazing land in Wing for his sheep in the 1520s, before he built his manor house, Ascott Hall, and enclosed Wing Park. The main Enclosure Act for Wing was passed in 1798. The commissioners met "at the house of John Wood known by the sign of the Cock Inn" on 8.5.1797.





**HANSONS**  
HERTFORDSHIRE

AUCTIONEERS & VALUERS

# FREE VALUATIONS

**Wing Village Hall (Large Hall)**  
**71 Leighton Road, Wing,**  
**Leighton Buzzard LU7 ONN**

**11<sup>th</sup> June 2026 3pm - 6pm**

AS  
SEEN ON  
QUEST  
TV

Discover the value of your treasures, consigning now for monthly auction. Our friendly experts will be happy to provide you with a FREE valuation of your Jewellery, Watches, Silver, Coins, Antiques, Toys, Wine and Whiskey, Collectables, Fine Art, Militaria and more.



Please contact: **Natasha Marriott (Cert GA) 07807 816 485**  
**[hansonsherts.co.uk](http://hansonsherts.co.uk)**

# L WARING

## Painting and Decorating



- Painting and wallpapering
- Decorative paint techniques and effects
- Hand painted kitchen & furniture
- Murals & artwork
- Coving, plaster repairs
- Tiling

Est.1986

Very competitive rates  
References available

01296 681579  
07762 101932  
leejwaring@btinternet.com

## Ladybird Baby and Toddler Group



**Thursdays 9.30am-11.00am**  
£2 for first child; 50p each additional sibling

Friendly environment for busy little people.  
Enclosed garden with great facilities.  
Song time and craft activities.  
Breastfeeding friendly.

Follow us on Facebook 

**Wing Scout Hut, Cotes Way, Wing**  
Contact Claire on 07788 850753



## A J Waring Carpentry Services



All aspects of carpentry & joinery  
Doors, windows, wardrobes, kitchens & bespoke carpentry  
Local & reliable  
NVQ Qualified

Established for over 15 years

07468 041680      ajwcarpentry2@gmail.com

# Londis



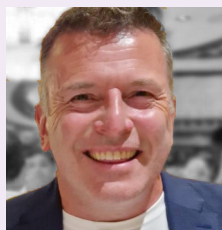
## Wing Londis & Post office

We are on Facebook now. Join us to see offers and news.



@winglondis

SHOP OPENING HOURS 7AM to 8PM EVERY DAY



# WING SKIES

with  
**Greg  
 Wakefield**

Summer is upon us once more, and with it come the lighter nights as we approach the Summer Solstice on 21 June. Unfortunately for astronomers/astrophotographers, night never reaches full astronomical darkness, so astronomy can be challenging due to the lighter nights. However, on a positive note the nights are much more pleasant and warmer for observation, which makes the Perseids meteor shower more attractive to observe.

The peak of the Perseids meteor shower takes place on the evening of 12 August. This is the second best meteor shower of the year, the best being the Geminids in December, but the warmer nights make it more pleasant for observing. The moon will be out of the way this year, not rising until after dawn on 13 August, which will make it perfect viewing for the Perseids - providing that we get clear skies of course. The zenith hourly rate for the Perseids is 110 meteors per hour (the rate for Geminids is 120). This rate is variable, but it is the theoretical maximum number of meteors that an observer may see during the peak of a shower, assuming that conditions are perfect.

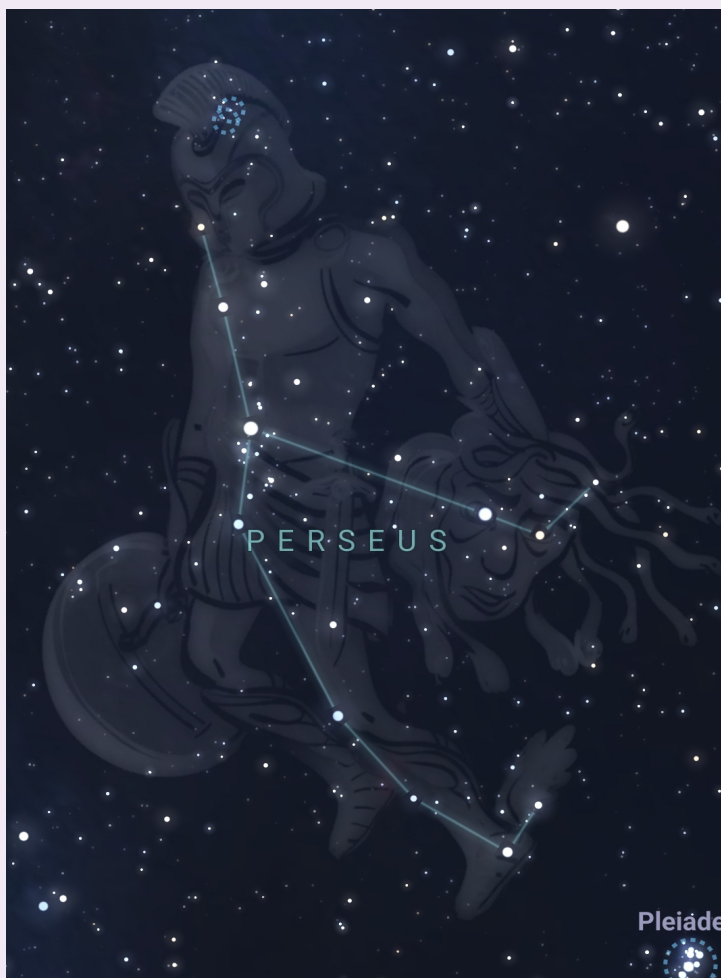
Do you know what causes a meteor shower? As the earth travels around its orbit of the sun, it crosses the path of comets and asteroids. These solar system travellers leave dust in their wake. As the earth passes through this dust it burns up in the earth's atmosphere. The angle that it hits the atmosphere denotes the speed of the meteor and the colour of the meteor denotes its composition. For the Perseids, the speed is about 212,000 kmh, which is pretty high for a meteor shower. Regarding the colours, if you see green it shows that magnesium is present, yellow is iron and red is nitrogen/oxygen.

On the right are two photos that I took with my DSLR camera of the 2024 Perseids shower. As you can see, the colours range from red, through yellow and light green, showing traces of the elements mentioned. The blurry brown patch at centre bottom of the lower photo is cloud. To take the photos I used an 18-55mm lens, with the camera set to take continuous 10 second exposures and the ISO set to 1600. The camera was used with a tripod.

Finally, I need to tell you about the radiant of a meteor shower. This is the area of sky from where the meteors appear. The Perseids are called this because they appear to come from the area of sky where the Perseus

constellation is visible in the sky (shown on the left courtesy of Stellarium). To see the best meteors, hold your closed fist towards the edge of the constellation and start viewing from the sky around the constellation. The closer to the constellation, the shorter is the meteor tail seen, further from the constellation the longer is the meteor tail seen.

Happy observing and I wish you clear skies. If you have any questions you can contact me by email at: [wingastronomygroup@gmail.com](mailto:wingastronomygroup@gmail.com)



**YOU ARE ALWAYS WELCOME**



**AT THE POP IN  
 Tuesday 16<sup>th</sup> June  
 WING SMALL HALL**

**1.45 – 3.45**

**Come for tea, coffee, cake,  
 a chat and a few games  
 TO FIND OUT MORE CALL  
 01296 688044 or  
 01296 720946**



**Wheelchair Available**

**There is a light wheelchair available for anyone to borrow. It is foldable, easily manageable and fits easily in a car boot. Call 07904 476156**

# Sell Your Home

With A Local Wing Estate Agent



**EweMove**

SALES AND LETTINGS

Book Your FREE Home Valuation Today  
01525 300 010 | [EweMove.com](http://EweMove.com)



In conjunction with  
**Deakin-White**

Hansons Hertfordshire  
are delighted to be  
holding a **FREE**  
valuation day in  
conjunction with

**Deakin-White at their offices in Wing.**

If you have jewellery,  
silver, art, antiques,  
collectibles or a house  
to sell, please do come  
along and see our  
specialist valuer.



AS  
SEEN ON  
QUEST  
TV

AUCTIONEERS & VALUERS  
**[hansonsherts.co.uk](http://hansonsherts.co.uk)**

**8<sup>th</sup> June 2026** 10am – 2pm

Deakin-White, 4 Aylesbury Road, Wing,  
Leighton Buzzard LU7 0PB

For further information, please contact:

**Natasha Marriott (Cert GA) 07807 816 485**




**Richmond Renovations**  
Home renovation – Interior & Exterior

- Kitchen & bathroom fitting
- Project Management
- Internal/external painting & decorating
- Plastering
- Tiling

Richmond Renovations provides a friendly and efficient service for all your home refurbishments. Working to an exceptionally high standard providing you with complete job satisfaction.

To arrange for a free estimate or to discuss ideas please call Jonathan Richmond on 07764 520194 / 01296 688397 or email [jonathan.richmond@richmondrenovations.co.uk](mailto:jonathan.richmond@richmondrenovations.co.uk)

**Richmond Renovations**  
[www.richmondrenovations.co.uk](http://www.richmondrenovations.co.uk)

Find us on Facebook  
 **Richmond Renovations**



Professional Painting & Decorating Services

HIGH-QUALITY WORK AT AFFORDABLE PRICES!

- ✓ Interior Painting
- ✓ Exterior Painting
- ✓ Wallpapering
- ✓ Skilled Decorating

Transforming Homes in Wing & Surrounding Areas



Call for a FREE Quote:  
**07876 163490**  
Deasydecor@gmail.com

- ✓ Fully Insured
- ✓ 30 Years' Experience
- ✓ Reliable & Trustworthy



Fully Insured & Competitive Prices:  
Your Local Decorating Experts!

**WE BUY RECORDS!!!**

ALL GENRES, ALL ERAS,  
NO COLLECTION IS TOO BIG OR SMALL.

BASED IN WING AND SERVING ALL OF BUCKINGHAMSHIRE, WE HAVE OVER 35 YEARS EXPERIENCE OF VINYL & MUSIC MEMORABILIA AND WE WILL PAY THE BEST PRICES.

WE WILL COME TO YOU SO ALL YOU HAVE TO DO IS ...

CALL ANGELA ON 07976 204249 OR EMAIL [TURNTABLE.RECORDS@HOTMAIL.COM](mailto:TURNTABLE.RECORDS@HOTMAIL.COM)



The **appliance** PROFESSOR



Can we fix it? **Yes, we can!**

- All domestic appliances repaired
- Fast and reliable service
- Same day/next day appointments
- All parts fitted, fully guaranteed
- No hidden charges, fully insured

**0800 145 5087**  
OR  
**07852 101087**



[www.theapplianceprofessor.co.uk](http://www.theapplianceprofessor.co.uk)  
[info@theapplianceprofessor.co.uk](mailto:info@theapplianceprofessor.co.uk)

# Country Notes

by **Iain Malin**

from Canada



It's just about half way through May as I write this and the middle of the year is only five weeks away. Here I think winter is finally relinquishing its grip. It has been long this year, things looked to be picking up in mid-April after my last Nature Notes, with a few waterfowl, swans and European Starlings appearing. Then the next day nothing...they had all disappeared. Something was about to happen and they knew better than the weather forecasters. Then it did happen. On 24/25 April there was a massive snowstorm and temperatures plummeted; with 30cm of snow yet again we were digging ourselves out.

Bluebirds had arrived and being both seed and insect eaters they can survive a short period of bad weather providing it clears quickly. A similar storm a few years ago that lasted much longer killed many, and there was a sharp population drop from which they have still not recovered. Fortunately, with this recent storm much of it had disappeared within 24 hours and more Bluebirds started to move in. Over here they are much loved and boxes are put on fence posts, especially alongside the roads. Usually they are put in pairs about one metre off the ground and five metres between the two. Many Bluebirds use these boxes, but only one because of territorial boundaries. The other is usually occupied by Tree Swallows, which arrive about two weeks later. They have just arrived now and fight vigorously for the available boxes. They arrive just as the pussy willow buds open and the first leaf buds burst, which attract insects. They feed almost exclusively on midges and mosquitoes. Today the first leaf buds are bursting but generally everything is still brown.



American Avocet

Solitary Sandpiper



Milbert's Tortoiseshell

Everything changes very quickly here as soon as the temperature rises and there is standing and running water bringing in waterfowl and waders. The bird count can triple or even quadruple in 24 hours. Yesterday was a day for clocking up the waders, and new arrivals were Solitary Sandpipers, Lesser and Greater Yellowlegs, Black-necked Stilts, American Avocets, Long-billed Dowitchers and Marbled Godwits all sifting, probing or picking off newly emerged insects from the water.

Whilst talking about Godwits, some of you may have read recently, although it was three years ago, about a three- or four-month old Bar-tailed Godwit (Britain has them pass through as well) which was ringed in Alaska and flew non-stop to Tasmania. This was a distance of 13,500 kilometres in 11 days. This is a record for a non-stop powered flight. To do this its non-essential organs were partly absorbed by its body, i.e. stomach, liver, kidneys and intestines by 25%, but it had increased its body fat to 50% for the journey. Everything returns to normal after a short time in Tasmania.

Other news...while out a few days ago I saw a cow moose and a last year's calf in a terrible state. This was not a case of losing the winter coat, but more a severe infestation of Wood Ticks to which they are susceptible. These blood sucking Arachnids, yes related to spiders, can cause so much trouble they can actually cause the death of the moose in cold weather. Humans of course can catch Lyme Disease from Deer ticks, but it's nothing to worry about if you find one on you or your dog - just remove it before it becomes attached.

Other other news...the first couple of butterflies were seen yesterday (12 May) a Mourning Cloak (Camberwell Beauty in Europe) and a Milbert's Tortoiseshell (like a drab European Tortoiseshell), both on the wing in the 20°C temperatures.

As for flowers, they are very thin on the ground I'm afraid at present with only Prairie Crocuses just over. This is not a true Crocus but an Anemone, like our Pasque Flower, flowering about the same time at Easter.

Things will pick up fast as the farmers are drilling their crops now that spring is arriving, but I may not see much more as I will be back in England.








Moose



# THE PLUMBER

Apprenticeship Served 1972 - 78  
City and Guild Qualified  
**ON CALL EVERYDAY**

Domestic and Commercial Installations,  
Maintenance and Repair Service.

-  Burst/Leaking Pipes
-  Blocked Sinks/Toilets
-  Hot Water Tanks
-  Overflows
-  Showers
-  Radiators and Pumps
-  Garden Taps/Water Butts
-  Fault Finding
-  FREE WRITTEN QUOTE

**Call The Plumber Anytime**  
**07970 317843**  
**theplumber@email.com**

*1<sup>st</sup> aid for your plumbing*



## Our Pork Beef & Lamb

**At Wing Market**  
**Thursdays**  
**9am-12**



**Farm Shop open**  
**Fri 12-6pm**  
**Sat 9-1pm**

**MorrisofHoggeston.co.uk**  
**01296 714239 MK18 3LH**

## Laptop & Computer

**Printer, Apple Mac, setup, Repairs, Network, mail setup, Data recovery, Internet, wireless, Virus infection, 121 Tuition, Tablet, Ipad, smartTV, Phone Home/Office computer problems, 7days services from £40 NO Fix - NO FEE**

**We visit You Qualified, Experienced**  
**01525 306316 07925 338435**  
**PcLaprepairs@Gmail.com**



# RDS Garden Maintenance & Pressure Washing Service Ltd

## Domestic and Commercial

Waste carrier licensed

Public liability insured

- Pressure Washing
- Domestic and Commercial
- Driveways - Re-sand & Sealed
- Patios and Paths
- Decking
- Concrete repair
- Tarmac surface repair
- Gutter cleaning
- Buildings cleaned
- Tennis/Netball court cleaning

- Hedge cutting
- Grass cutting
- Tree pruning
- Weed control
- Leaf clearance
- Strimming
- Turfing
- Full garden clearance
- Litter picking
- Removal of fly tip waste

**Winter Maintenance**  
For rapid response through the night and day, for gritting and snow removal.



**For a FREE estimate call Rob on: Tel. 07908 030408**

**Email: robsawyer719@gmail.com**





## Looking to visit Australia...

For help with creating the best itinerary for you please call or email us

- Experienced Aussie Specialist Agent
- Friendly, honest advice from an independent travel agency
- Specialist in tailor-making holidays to destinations worldwide
- Extensive experience to arrange every detail
- Using fully bonded tour operators
- No booking fees



Travel Impressions

01442 890265

enquiries@travelimpressions.co.uk  
www.travelimpressions.co.uk

Suite 4, George House, 64 High Street, Tring, Herts. HP23 4AF



**HOSPICE AT HOME**  
**VOLUNTEERS**  
Support to clients, respite for carers

## Do you or someone you know have a life limiting illness?

Do you think they could do with some extra support or friendship? Or even some help for a spouse or family?

Hospice at Home Volunteers provide practical, social and emotional support to you, your family and your carers.

We offer a free service that provides strength and encouragement at a difficult time. We offer practical help where it is needed during a life limiting illness.

The support provided is flexible depending upon your needs, but could include:

- Spending time with you so your carer can have a break
- Accompanying you on trips or to the shops
- Companionship • Providing information and support

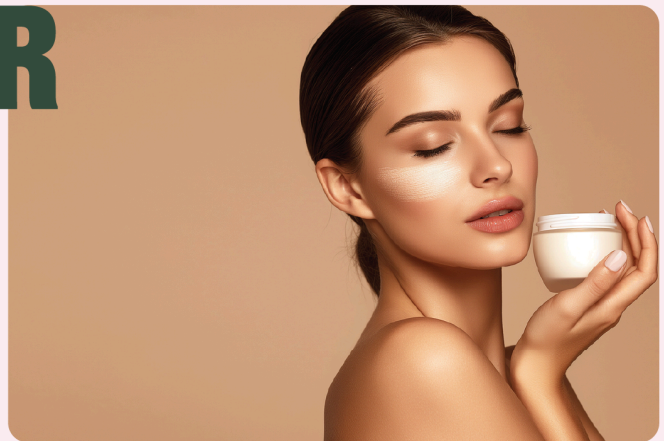
If you would like more information:

Call us on: **01525 854713**

or email us on: [info@hospiceathomevolunteers.org.uk](mailto:info@hospiceathomevolunteers.org.uk)

# UNLOCK YOUR SKIN'S TRUE POTENTIAL

→ [yourhappyskinplace.com](http://yourhappyskinplace.com)



Dealing with issues such as teen skin, psoriasis, eczema, inflammation, or signs of ageing?

**I CAN HELP**

Repair, restore and rejuvenate your skin with natural treatments from Your Happy Skin Place.



**BOOK ONLINE**



**07442 157 400**

welcome@yourhappyskinplace.com | 16 The Green, Soulbury, Beds, LU7 0DD



# LAMBOURNE

## TREE & GARDEN SERVICES

### Full garden maintenance

Specialising in

- Fencing, Patios, Driveways
- All aspects of groundwork including footings and oversites
- All aspects of tree work, pruning, hedge trimming, planting, turfing, etc
- Fully qualified, fully insured
- Trading since 1950

Highbury, Aylesbury Road, Wing  
**07768857065**



## TRADITIONAL VALUES WITH MODERN SKILLS

Servicing & Repairs to All Makes of Vehicles

Now including Hybrid & Electric



### Why Choose Us

- ✓ Fully Qualified Technicians (IMI Accredited)
- ✓ Friendly, Honest, and Transparent Service
- ✓ Competitive Prices with No Hidden Costs
- ✓ Family Run Garage
- ✓ Collection and Delivery Service in the Local Area

07947984083

Find us on   
 WWW.WINGPARKMOTORS.CO.UK

### Our Services

- WHEEL ALIGNMENT
- MOTS ARRANGED
- DIAGNOSTICS
- WARRANTY SERVICES
- BRAKES
- TIMING BELTS
- TYRES
- WET BELTS

01296688256

Workshop@wingparkmotors.co.uk  
 Stewkley Rd, Wing, Leighton Buzzard LU7 0NE



# CRS

DOMESTIC - COMMERCIAL  
 CLEARANCE



## A COST EFFECTIVE ALTERNATIVE TO SKIP HIRE AND WE DO ALL THE LOADING FOR YOU

- House clearance
- Rubbish clearance
- Trade waste clearance

scan QR code to get a FREE quote

Tel: 01525 854438

Mob: 07852 839 372

E-mail: CRS-Clearance@hotmail.co.uk

Here to help with all the jobs you don't want to do

WE COVER BEDFORDSHIRE, HERTFORDSHIRE, BUCKINGHAMSHIRE, NORTHANTS AND ALL SURROUNDING AREAS.



growing through the sward, it should provide a really nutritious and aromatic feed for the cattle this winter. More importantly, it gives us a bit of reassurance that silage stocks should remain healthy even if grass yields end up being tighter later in the season.

The cows themselves are thoroughly enjoying being back out grazing. There's nothing better than seeing young calves out in the fields with plenty of room to run around at full speed, enjoying their freedom with very few boundaries — apart from my fencing of course!

There have been a few financial positives too. The dry weather has reduced the need for fungicide applications, helping to lower some input costs. However, rising fuel prices are beginning to hit home. With tensions in the Middle East continuing to affect oil markets, harvest fuel costs are climbing sharply. Last year, at around 70p per litre, our harvest fuel bill would have been around £22,000. This year it's looking more likely to be between £36,000 and £40,000 — a significant increase and another reminder of the pressures facing British farming.

Margins are undoubtedly tighter than ever, and many farmers are asking what the future holds for the industry. For some, diversification is becoming increasingly important, allowing



Alex Warren



farms to continue producing food while other enterprises help support the business during more difficult years. Others may look at options such as solar developments, which can offer more predictable returns.

But for many farming families, including my own, farming has always been about far more than profit margins alone. I'm proud to be the fifth generation in my family to farm this land. Farming is about being a custodian of the countryside — caring for the environment, maintaining the landscape, and protecting the beauty of the rural areas we are fortunate enough to work in every day.

Farming has never been an easy profession, but it remains one built on resilience, optimism, and a genuine passion for the land and livestock we look after.

The past month has certainly brought its challenges, with changeable cold weather making conditions difficult across the farm. Dry conditions combined with frosty nights have slowed growth in many of the wheat crops, but despite this the crops are actually looking very well overall and there are still plenty of reasons to remain positive as we head towards harvest.

One encouraging area at the moment is the silage crop, which is looking promising. We've already made a start with silaging, although recent showers have made it slightly stop-start at times. As always, farming keeps you watching the weather forecast closely!

This year we've also taken some land out of crop production and put it into herbal leys for silage. With a mixture of herbs and legumes



Your care, your way, in your home

**SERVICES WE OFFER**

- From Half an Hour Visits
- To 24 Hour Live-In Care
- Domestic Help & Cleaning
- Palliative & Specialised Care
- Personal Care
- Meal Provision
- Companionship
- Assistance With Medication

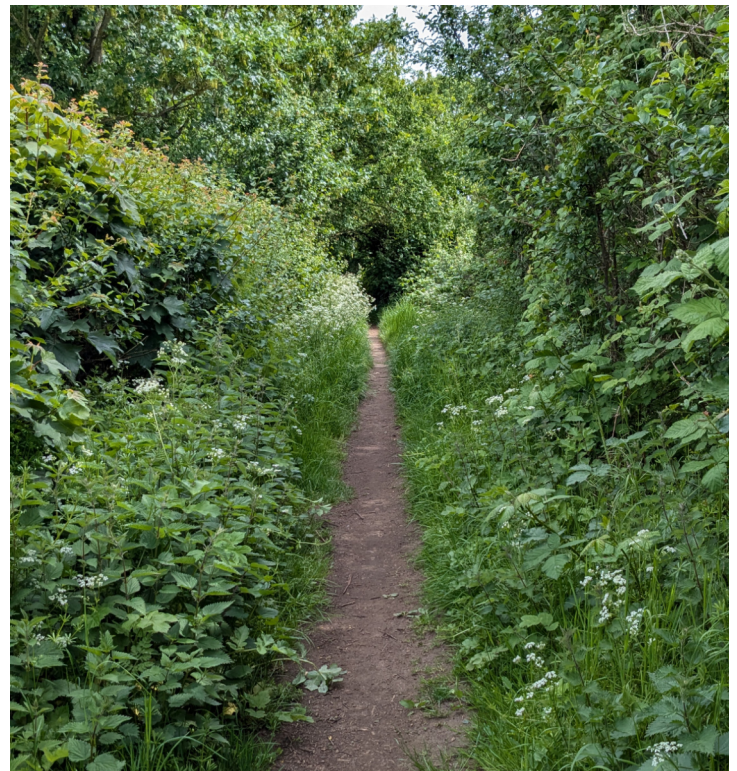
**CONTACT US**

01908 272846    [miltonkeynes@myhomecare.co.uk](mailto:miltonkeynes@myhomecare.co.uk)

[www.myhomecare.co.uk](http://www.myhomecare.co.uk)



**WHERE'S THIS?**



**Test your local knowledge with this picture quiz!**

If you know where this is, email [editorial@whatsoninwing.info](mailto:editorial@whatsoninwing.info). First correct answer gets no prize, just the sheer glory of seeing your name printed in the next issue of What's On in Wing. (See page 42)

Got a picture of a secret spot? Send it in, and we'll see who recognises it!



**PROFESSIONAL QUALIFIED PLUMBING & HEATING ENGINEER**

- For all your Plumbing, Gas , Oil & Heating requirements
- Boiler & appliance installations, system upgrades, servicing, fault finding & repair
- Oil – boiler and tank installations, service & repair
- Complete bathroom installations & design
- No job too small / Free no obligation quote/ No call out charge

**Tel : 01296-688968 / 07527900028**

E mail : [info@damianstewartplumbing.co.uk](mailto:info@damianstewartplumbing.co.uk) [www.damianstewartplumbing.co.uk](http://www.damianstewartplumbing.co.uk)

7 Chiltern Road, Wingrave, Aylesbury, Bucks,  
HP22 4QQ



# Smash your goals and get results at Hunt Fitness

We offer tailored one-to-one, small group and online personal training with our dedicated coaches, who will support you at every stage of your fitness journey.



Visit our studio or get in touch to discuss how we can help you get started.

[www.huntfitness.co.uk](http://www.huntfitness.co.uk)

[f huntfitnessuk](https://www.facebook.com/huntfitnessuk) [@huntfitnessuk](https://www.instagram.com/huntfitnessuk)

Cublington Road, Wing



hunt fitness

# Dunn's Local Locksmith

Wing based, fully mobile locksmith  
Independent and family run  
20 years experience



## 07434 419431

[www.dunnsllocallocksmith.co.uk](http://www.dunnsllocallocksmith.co.uk)

## Wing Cricket Club Gears Up for the New Season



Wing Cricket Club heads into the new season with renewed energy as they begin their 2026 campaign in Division 3 of the Four Counties Cricket League. The season got underway on 25 April, when Wing faced Bedford Malayalees at their home ground in Mentmore; the result was Wing 139, Bedford Malayalees 177.

There is a real sense of optimism around the club this summer, with new faces joining the squad and a strong focus on development. Club Captain Pete Wallace is clear about ambitions for the year ahead: *“This season is about enjoyment and development, regardless of results. We want to give our younger players valuable game time and experience, helping to build a stronger team for the future. Pre-season training has gone really well and the squad is raring to go.”*

Off the field, Wing CC has been hard at work. The team will take to the pitch this season sporting a brand-new kit, sponsored by new partners Tile Xpert. The club is extremely grateful for their support and looks forward to building a lasting relationship. Club Secretary Paul ‘Pablo’ Burgin commented: *“We’re incredibly grateful for the backing from Tile Xpert. Their support plays a huge role in helping the club grow, both on and off the field.”*

Wing CC continues to strengthen ties with the community. Matches are played at Mentmore and friends, families and villagers are always warmly welcomed. Over the past year, the club has expanded its social media presence thanks to Brian Clarke, helping to raise the club’s profile and attract new interest.

The club’s ongoing relationship with The Cottesloe School is beginning to bear fruit, with young players now attending nets sessions and taking their first steps towards First XI cricket.

Vice-Captain Irfan Javed summed up the mood around the club: *“There’s a real buzz around the squad this season and a strong sense of purpose. The aim is to keep improving, be consistent and challenge ourselves in every game.”* With fresh faces, new kit, and growing community support, Wing Cricket Club looks forward to an exciting summer of cricket ahead.

# SPORTS ROUNDUP



## 'In The Ditch' Wing Village Bowls Club



by Salli

Here we are half way through the year and into the serious part of the season, with the start of the evening leagues. Our two teams; the Walkers and the Wobblers are looking forward to travelling around the County and playing teams who are not usually on our fixtures card.

To date our fixtures haven’t been going the way we would have liked, but each match has been enjoyable in its own way. We did experience a terrific win over one of the best teams in the County, beating them by a massive 45 points much to chagrin of some of the teams whom they have beaten into submission.

Our tea provision is still the envy of the teams we play. Even though it is very simple, it is presented well and served on china plates. During the tea the Skips of both teams give a little speech, giving the scores and also naming the highest winning rink on each team. As a reward for being the best rink you are given a ‘prize’, which in the best of traditions you then pass over to the opposition as a kind of commiseration for losing. These presents used to be either a notepad or pen, I can’t tell you how many of them I got, but when I was still teaching my classes used to love receiving them every Monday. Nowadays though the trend seems to be to give a ‘bar voucher’ to the winners to spend at their bar, and it’s not passed over to the opposition to use. Quite frankly I think this seems to be a little mean but I can understand why it’s done as it keeps money within the club. Here at Wing, we moved on from pens and notepads and progressed to keyring torches, glasses cleaner wipes, extending dusters and anything else interesting or potentially useful we can find in aisle 19 (don’t quote me on this I just guessed which one it is) in Tesco in the 3 for 2 section.

Our recruitment drive for new members has been a little more successful than in recent years, as we have picked up three newbies from Wing who have been most welcome and who are already playing in fixtures. We could still do with a few more, so any Tuesday evening before the nights start to draw in, do come across and give bowls a try.



# The Wing Singers

## SUMMER CONCERT

### 20<sup>th</sup> & 21<sup>st</sup> June

### Wing Village Hall

Sat 20<sup>th</sup> June 7 - 9.30pm (doors open at 6.30pm)
Sun 21<sup>st</sup> June 3 - 5.30pm (doors open at 2.30pm)

---

Raffle available • Refreshments by donation • Adults £12 / Under 16s £6

Book now

Scan the QR code to book your tickets or go to [www.thewingsingers.org.uk](http://www.thewingsingers.org.uk)



For all enquiries please email [wingsingers@yahoo.co.uk](mailto:wingsingers@yahoo.co.uk)

f The Wing Singers

@thewingsingers

## Davidsons Homes are proposing to build a little less than 100 houses on land adjoining Well Lane.

When Wing Parish Council took informal soundings on residents' opinions on various potential development sites in the Parish, the Well Lane site was ranked among the least popular.

Reactions to the proposal have been mixed. Like any site to the south of the A418, it brings considerable difficulties in terms of access. It sees the loss of a popular and accessible green space. Although it may be well-meaning, the plan threatens to turn working land and rural footpaths into urban parks, and turn sites of ancient monuments into local visitor attractions.

It is Davidsons' job to build houses and, understandably, they wish us to see community-wide benefits in their proposal. Linking Ascott more closely to Wing is claimed to be one of those benefits. But Wing is already linked to Ascott, by those grassy footpaths across open land. Those footpaths would become what are called 'shared surfaces' through a housing estate. Some would say the proposal actually creates an urbanised barrier between Wing and Ascott. Many residents remember that Ascott House and Garden used to be a short walk away. Since the visitor entrance was moved, access is now more than a half-mile away from the village boundary, with no protected crossing.

Much is made of the creation of 'new' green space to the south of the new housing estate. But local planning regulations demand that land to be provided, and it's simply a smaller and more distant replacement for the space and open views that will be lost under bricks, tarmac and block paving.

Davidsons' recent open evening was well-attended, both by residents and the developer team, and considerable information was made available. But visitors came away with mixed views, and mixed messages. Will existing footpaths be turned into pushchair and wheelchair accessible pathways? Well, yes, but also no. Has Buckinghamshire Council reconsidered its view that the site is inappropriate for development, on heritage and landscape grounds? 'No it hasn't. But we disagree with them'. Or 'We've got a whole team working on that.'

Vehicle access to the site featured high on residents' concerns. Buckinghamshire Council's Highways Department is said to be reluctant to see measures, such as roundabouts, that would restrict traffic flow on the A418. Pedestrian access will be aided by a toucan crossing, which is apparently not a restriction on traffic flow. And instead of a roundabout, the junction between Well Lane and the Leighton Road will be changed, to allow traffic to turn left onto the A418 without queueing behind traffic waiting (perhaps indefinitely) to turn right. Some visitors felt this solution to be inadequate, but were reassured that vehicle movements would anyway be minimal, as many residents would make use of the Buckinghamshire Council car share scheme. Yes. They really said that.

Davidsons is not a big conglomerate. The houses it illustrates appear to be pleasant, its intentions sincere, and its ambitions for the communities it builds seem genuine. Its challenge, anywhere, is to find an appropriate and uncontentious location for its work.

If you missed the open evening in May, you can find the same information from Davidsons at [www.leightonroad-wing.co.uk](http://www.leightonroad-wing.co.uk). There is also a feedback form. The deadline for comments is shown as 27 May, but that deadline has been extended to 8 July.

### Clarification

Davidsons website makes the following statement:

*'Buckinghamshire Council undertook multiple Call for Sites exercises to inform their emerging Local Plan. Submitted sites will be assessed on their suitability, achievability and availability, which will inform the preferred sites as part of the next Local Plan consultation (Regulation 19) in July/August 2026. The site at Leighton Road was submitted as part of the Council's Call for Sites exercise (site ref. 3577). In due course, Davidsons Homes will submit a Full Planning Application for the development of ca 98 new homes on the site at Leighton Road.'*

The statement leads one to assume that the Well Lane site is included for consideration in the Local Plan. It is not. That statement is incomplete, and should admit that following submission of the land in the Council's Call for Sites, the site was excluded from the Local Plan. BC deemed it Unsuitable, on the grounds of Unacceptable harm on Heritage assets and Unacceptable harm on Landscape.



What's On in Wing invited Ascott to contribute to this article. It said:

### A Thoughtful Approach to Growth: Supporting Our Village's Future.

As with many rural communities across Buckinghamshire, our village is facing a familiar challenge: how to preserve the character and heritage we value, while also ensuring that it remains a thriving, sustainable place for future generations.

Given the history of Ascott Estate, we understand this delicate balance and have been carefully exploring various options to provide much-needed housing in a way that respects both the landscape and the existing community.

#### Why Is Development Being Considered by Ascott?

Like much of the southeast, Buckinghamshire continues to experience strong demand for housing. Local planning authorities are under increasing pressure to deliver new homes - not only to meet population growth, but also to ensure that young people, families, and key workers have the opportunity to remain within their communities.

Without new housing, villages can gradually lose essential services such as schools, shops and public transport links, as populations age and younger residents are priced out or move away. The intention behind Ascott's proposals is to carefully consider an appropriate mix of different types of development whilst ensuring a responsible role in meeting these wider local housing needs, while strengthening the long-term vitality of our village.

#### Location Matters: Building Next to the Village.

The land and developments being considered are in areas immediately adjacent to existing settlements and we feel are appropriate for that location. This is a deliberate choice. By positioning new homes close to the village:

- Residents will have easy access to existing amenities and infrastructure.
- The development can form a logical and cohesive extension of the village, rather than creating isolated or disconnected housing.
- It reduces the need for car dependency compared to more remote locations.

Careful design and landscaping will be essential to ensure that the transition between existing and new areas is sympathetic and preserves the rural setting.

#### A Broad Range of Housing Options.

In addition to the proposed new homes at the site south of Leighton Road, Ascott is in the fortunate position to also consider complementary opportunities that can diversify housing options and better reflect community needs:

##### 1. Self-Build and Custom Build Plots at Lower Ascott.

There is growing interest in self-build homes, allowing individuals and families to design and create houses tailored to their needs. Providing a small number (4) serviced plots:

- Encourages architectural diversity and individuality.
- Supports local tradespeople and small businesses.
- Enables local people to remain within the community.



Above: the site as it is today. Above right and below: Davidsons Homes' vision for Well Lane and Wing.



**2. Conversion of Existing Farm Buildings at Helsthorpe Farm.**

Old barns and farm buildings, of which there are several located on farmsteads across the Estate at Helsthorpe and Home Farms, and are no longer viable for modern agricultural use, present an opportunity to create unique and characterful homes and businesses. Sensitive conversion:

- Retains historic structures and rural heritage.
- Minimises the need for new construction materials.
- Makes effective use of existing built assets.

By combining new-build homes with conversions and self-build plots across the wider Estate, we are aiming to create a balanced, varied development rather than a one-size-fits-all scheme.

**Benefits for the Community.**

Well-planned development can bring tangible benefits, not only in housing provision but also in enhancing the wider village environment.

These may include:

- Investment in local infrastructure**, such as road improvements, pedestrian links, and potentially contributions towards schools or healthcare facilities.
- Support for local services**, helping to sustain shops, pubs, and community facilities by increasing footfall.
- Affordable housing provision**, enabling younger residents and those with local connections to stay within the parish.
- Public open spaces and landscaping**, improving access to green areas for recreation and wellbeing.

Such contributions would be guided by the local planning process to ensure they align with community priorities.

In addition to this, it also enables Ascott to reinvest directly into the Estate and indirectly into the community, whilst also allowing the wider farming business to prosper at a time when agriculture comes under increasing financial pressure from various sources.

**Respecting Rural Character.**

A key concern for many residents will rightly be the impact on the village's character and surrounding countryside. This is understood and taken seriously, not least as Ascott Estate is in a prominent position in the community and has been since the 1880s, not least seen by the numerous residential properties in Wing village that were built by the Estate and are now privately owned.

Any proposals brought forward would seek to:

- Reflect local architectural styles and materials. Ascott has been involved in the Parish Council's 2023 Design Code which provides guidelines to manage development, ensuring it fits local character and protects historic sites, open spaces, and views. The plan focuses on high-quality design, sustainable development, and maintaining the village's rural feel, which Ascott are mindful of.
- Retain important views and natural features such as hedgerows, trees and wildlife habitats.
- Integrate green buffers and publicly accessible open spaces.
- Maintain a strong sense of place and identity.

The aim is not to change the essence of the village, but to allow it to evolve sensitively.

**Engaging with the Community.**

At this stage, these ideas are part of an ongoing exploration rather than a finalised plan. Ascott Estate and its owners are actively involved in the consideration of all potential opportunities to allow the Estate and local community to thrive and prosper. Meaningful engagement with residents is a crucial part of the process. Local knowledge, concerns, and suggestions will help shape any future proposals so that they work for the community as a whole. Comments can be made on the following website - [www.leightonroad-wing.co.uk](http://www.leightonroad-wing.co.uk) – where further information can be found.

**Looking Ahead.**

Change is never easy, particularly in places we care deeply about. However, by planning thoughtfully and proactively, Ascott Estate hope there is an opportunity to guide that change in a positive way.

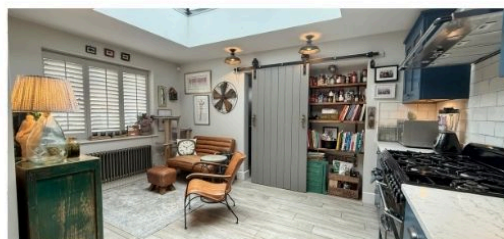
Providing a mix of new homes, self-build opportunities, and conversions, all set within a well-considered design, can help meet housing needs, support local services and secure the long-term future of the village.

Above all, the intention is to strike the right balance: preserving what makes our village special, while ensuring it remains a vibrant and inclusive place to live for generations to come, just as previous generations tried to do for us.

**We also invited Wing Parish Council to contribute to this article. It said:**

We're disappointed to see any speculative development put forward in our village. Parish Councils and our Unitary Authority work to formulate Neighbourhood and County-wide plans that manage the future of our communities in a rigorously considered consultative process, which sees local growth in the widest possible strategic context. Ascott contributed to that part of the Parish Design Code relating to Ascott and Gardens and Lower Ascott. Davidsons' Well Lane proposal doesn't align with our Neighbourhood Plan, and the houses it builds will not count towards the government's huge targets for the county. It's hard to see what benefits, if any, the proposed development could bring to the village. It's equally hard to see it as anything other than an opportunistic attempt to exploit the vulnerability of Wing before the County's Local Plan is finalised.

# Deakin-White



**Wing - £635,000**

Situated in a picturesque setting with open countryside just moments away, this individually designed and spacious three-bedroom extended detached Rothschild family home is brimming with charm, character, and versatile living accommodation. Originally one of only two former groomsman's cottages serving the nearby Rothschild Ascott Estate, the property beautifully combines period character with modern family living.



**Wing - £185,000**

CASH BUYERS ONLY | Leasehold - 60 Years | Ground Floor Maisonette | Village location | Shared Garden



**Hockcliffe - OIEO £300,000**

Well Maintained Terraced Home | Three Bedrooms | Village Location | Garage in Block | Countryside Views



**Wing - OIEO £300,000**

Two Bedrooms | End Terrace Cottage | Chain Free | Converted Loft Room | Large Garden | Village Location



**Wing - OIEO £350,000**

Village Location | Three Bedrooms | Character Features | Grammar School Catchment | Modern Family Bathroom



**Wing - £375,000**

Village Location | Four Bedrooms | Driveway | Spacious Dining Room | Conservatory | Downstairs WC

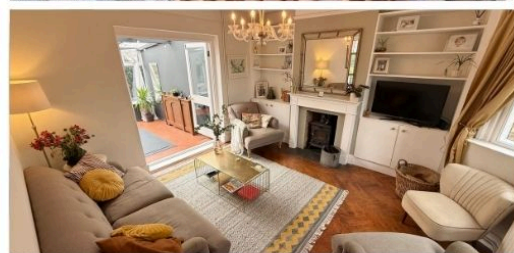


**Wing - £375,000**

Village Location | Potential To Extend (STPP) | Large Garden | Chain Free | Garage & Driveway | Utility Room

**01296 252 043**

# Deakin-White



## Wing - OIEO £600,000

This rare Edwardian former Rothschild property is now coming to the market, offering an abundance of character and charming original features throughout. Upon entering, you are welcomed by an inviting entrance hall that immediately sets the tone for the home's warmth and character.



## Wing - OIEO £375,000

Two Bedrooms | Village Location | Detached Bungalow | Driveway | Chain Free | Open Plan Kitchen & Living Area



## Wing - £425,000

Village Location | Three Bedrooms | Spacious Semi-Detached | Spacious Garden & Conservatory | Garage



## Cublington - OIEO £475,000

Village Location | Private Gated Driveway | Parking For Two Spaces | Two Bedroom Barn Built In 2010



## Stewkley - £630,000

Detached | Four Double Bedrooms | Original character features | Used to be a Chapel | Large garage with a workshop | Sought After Location



## Woburn Sands - £775,000

Spacious Detached Home | Five Double Bedrooms | Large South Facing Garden | Sought-After Location Close | Walking Distance To The High Street



Scan here for  
an instant report on  
your home

01296 252 043



# Looking for Tax Advice?

## Core Services

- Bookkeeping
- Accounts preparation
- Personal & Business Tax services
- Payroll
- Business advisory
- VAT compliance
- Company secretarial
- Forecasting and cash flow management
- Inheritance Tax Planning
- Capital Gains Tax Returns

Littlemead  
Hollington  
Soulbury  
Buckinghamshire  
LU7 0DN



t: 01525 279 110  
m: 07730 400 793  
e: [enquiries@wearepi.uk](mailto:enquiries@wearepi.uk)



# Your local Accounting Team



# The Long Game

A monthly wellbeing column

By Megan Borg-Neal

## Thriving, Not Just Surviving

*The quiet power of everyday habits*

It's often said that much of what we do each day happens almost automatically — shaped more by habit than conscious decision. Perhaps that's why making changes to our health can feel harder than we expect, even when our intentions are good.

These long, light days of June offer a natural opportunity to pause and reset the healthy intentions we set so enthusiastically at the start of the year. Life has a habit of getting in the way — time becomes stretched, routines shift, and before we know it, the best of intentions quietly slip down the list.

For some, it's not time but confusion that gets in the way. With so much conflicting advice around food, exercise and wellbeing, it can be difficult to know where to begin. For others, it may simply be that the bar was set too high at the outset.

Whatever the reason, getting started is often the hardest part. The reassuring truth is that it is never too late to begin, and there is no perfect moment or ideal age to start taking better care of our health.

We are often drawn to the idea that meaningful change requires significant effort, but in reality, the opposite is often true. Small, consistent actions — a short daily walk, a few minutes of movement, a moment of pause — are far more likely to become part of our lives than dramatic overhauls that are difficult to sustain.

In my work — and in my own life — I've seen how often it is the smallest habits that make the biggest difference over time.



One simple way to begin is by linking a new habit to something you already do each day. This might be as straightforward as doing a few calf raises while brushing your teeth or practising single leg balances while the kettle boils. This approach, often referred to as “habit stacking”, helps new behaviours feel less like an effort and more like a natural extension of existing routines.

Rather than trying to overhaul everything at once, it can be more helpful to focus on one small, achievable change and allow it to build over time.

Good health is not about restarting perfectly — it is about the quiet accumulation of positive habits and consistently reconnecting with ourselves in the midst of everyday life.

So instead of asking more of yourself, you might simply ask: *What is one small, sustainable daily habit that would help me feel better?*

Next month we'll turn our attention to energy – and why so many of us feel more tired than we expect, even at this time of the year.

Megan is a Wing resident and Health & Wellbeing coach, who can be contacted at: [megan@resetpractice.co.uk](mailto:megan@resetpractice.co.uk)

### DISCLAIMER

The views expressed are my own and the information provided is intended for general awareness and educational purposes only. It should not be considered a substitute for professional medical advice, diagnosis, or treatment, and readers should always consult their GP or qualified healthcare professional before making significant lifestyle changes.

## StotenGillam Chartered accountants Chartered tax advisers

Providing an outstanding professional, cost effective and friendly service to our business and personal clients.

Call now for a free initial consultation  
**01582 608601**

### OUR SERVICES

#### Taxation

Pay the minimum tax

#### Compliance

Business administration

#### Support

Grow your business

#### Start-ups

Your business a reality

#### Get to know you

Consultancy & advice



01582 608601 | [enquiries@stotengillam.co.uk](mailto:enquiries@stotengillam.co.uk)  
[www.stotengillam.co.uk](http://www.stotengillam.co.uk)

Alban House, 99 High Street South, Dunstable, LU6 3SF

## June Events

 <b>SUNDAY</b> <b>7<sup>TH</sup></b>	<b>LIVE MUSIC</b> 4:30PM – 7PM ACOUSTIC COVERS <i>with Tres Hombres</i>	 <b>SUNDAY SESSION</b>
<b>THURSDAY</b> <b>11<sup>TH</sup></b>	<b>QUIZ NIGHT</b> MONTHLY QUIZ, STARTS AT 7:30PM WITH PRIZE POT UP FOR GRABS!	
<b>SATURDAY</b> <b>13<sup>TH</sup></b>	<b>HANGING BASKET WORKSHOP</b> CREATE STUNNING DISPLAYS TO MAKE YOUR GARDEN POP THIS SUMMER!	
<b>SATURDAY</b> <b>20<sup>TH</sup></b>	<b>MUSIC BINGO</b> MUSIC, LAUGHS & PRIZE POTS 7:30PM START, GET YOUR TEAM TOGETHER!	
<b>SUNDAY</b> <b>21<sup>ST</sup></b>	<b>FATHER'S DAY</b> BOOK YOUR TABLE TO TREAT DAD THIS FATHER'S DAY. ENTER OUR BEER HAMPER GIVEAWAY!	
<b>SATURDAY</b> <b>27<sup>TH</sup></b>	<b>SPANISH TAPAS &amp; MUSIC</b> ENJOY A SPANISH TAPAS BOARD IN THE SUNSHINE WITH MUSIC AND WINE TO PAIR!	

01525 306595 | [THESTEWKLEYSWAN@GMAIL.COM](mailto:THESTEWKLEYSWAN@GMAIL.COM) | THE SWAN STEWKLEY

**the Stag**  
est. 1847

Community owned |  
Seasonal menus | Stunning location

01296 534450  
hello@thestag.pub  
The Stag, Mentmore, LU7 0QF



# S.E ROOFING

Fascias, soffits, guttering, flat roofing, tiling and slating, chimney pointing, roof repairs, roof cleaning, lead work, re-roofing, general building maintenance.

**Steve Eldridge**

Telephone: 01525 302552

Mobile: 07763 415785

Email: s.roofing@hotmail.co.uk

www.seroofingleightonbuzzard.co.uk

**Wing resident**

Buckinghamshire and Bedfordshire areas

**Free advice and quotations**

*The Wing Singers*

## DO YOU LOVE TO SING?

Come join our community choir where everyone is welcome. Enjoy a fun, relaxed and friendly atmosphere.

Membership open to all age groups - currently ranging from 8 - 80s	No auditions or musical knowledge needed
Weekly rehearsal information on the Wing Singers website	Professional, patient and approachable Musical Director, Jill Neenan
Varied repertoire, from popular classics to musical theatre, with something for everyone	Half-time interval to enjoy tea & coffee and a chat

**WING VILLAGE HALL**  
**EVERY SUNDAY\* 16:45-19:15**  
\*Rehearsals held on Sundays during school term time

For more information, check out our website, [www.thewingsingers.org.uk](http://www.thewingsingers.org.uk), or email Angie, the Membership Secretary, at [wingsingers@yahoo.co.uk](mailto:wingsingers@yahoo.co.uk)

# The race to build houses in Wing

**Our modest village has become a hot favourite with planners and developers. It's worth remembering that, while it's true we need and want more houses, there are already over a million houses in the UK with planning permission, but unbuilt.** And there are around a million long-term empty homes (not second homes. Long-term empty homes). Whether there is a real need to stampede to build 1.5 million houses in the next three years, mostly in the south-east of England, is a question.

While everyone waits for Buckinghamshire Council to finalise its plan, which will have a regulating effect on development across Bucks, it's open season for the developers, all of whom are piling in to get speculative plans approved before the County plan becomes fixed.

## Chesterfield Crescent

Not least of those piling in is BC itself, which has offered its contaminated site at Chesterfield Crescent for sale, originally simply with development in mind. Our Parish Council has done a tremendous job of proposing an alternative use for the site, which BC has been decent enough to consider. In due course, we'll find out if that proposal is accepted.

## Well Lane

Ascott has joined the race, with a plan to build houses on land alongside Well Lane. As our biggest local landowner, Ascott has long had a fine reputation for fiercely protecting and preserving the rural environment, and has succeeded in that mission, earning the gratitude of all who live in, visit, or pass through our village.

Ascott sees its mission, at least in part, as one to help Wing remain a thriving and sustainable place for future generations. Without new housing, the village can lose essential services, we're told.

Well, little more than 100 or so houses have

been added to the village since the late 1970s. Today, we have a second GP surgery, a pharmacy, a hairdressers. We've kept our Post Office and have two general stores, we've added a restaurant, and have a second community centre (the first is booked solid, always). We've grown our leisure and sport facilities. Our Social Club continues to thrive. Our village Care Home has been rebuilt and enlarged. We've added two small business parks and a woodland area. Our secondary school is oversubscribed, our shops are busy. Closed pubs - happening everywhere - are not a failing of Wing, they reflect a change in social behaviour across the country. And so, you might say we don't need more housing to help the village survive. We're doing just fine, thank you.



*Construction work on a Davidsons Homes site in Fleckney, Leicestershire*

Ascott knows that Buckinghamshire Council is proposing to build at least 1600 new houses, if not 2400, on land elsewhere in Wing. So, if the long-term future of Wing really does need securing, there's a much bigger cavalry coming to the rescue.

Ascott says proximity to a village is important, for easy access, creating cohesive developments rather than isolated or disconnected housing. At the same time, it proposes barn conversions at Home Farm and Helsthorpe, both of them notably isolated and disconnected places.

Ascott talks of providing much-needed housing. Listed barn conversions may be desirable, smart homes at Well Lane may be attractive, but they will do nothing, as Ascott suggests, to enable younger residents to set up home within the parish. 'Affordable' is a relative term, meaningless to those who might be called upon to find a mortgage deposit of £50,000. There is no talk of social housing, or shared-ownership housing - the kind of housing many of us would feel are the kind our village really needs.

Ascott's approach to Wing appears to be one of unctuous sincerity, so hand-wringingly impassioned it cannot be real. The words, in so many instances, seem denied by the facts. You're left with the feeling that Ascott's advice has been to treat us all like country bumpkins, and build, build, build.

## Wing New Town

The monster on our horizon is, of course Buckinghamshire Council's plan for Wing New Town, a development of as many as 2400 new houses outside the edge of the village. Those new houses are part of an emerging Local Plan, intended to fulfil a quota imposed on Buckinghamshire by Westminster. Our Unitary Council is being forced into accepting development which it openly declares to be unsustainable. There is no sign of any money for schools, healthcare, roads, or water and sewage systems. That means little, if any, hope of the facilities that make life liveable, not just for the almost 6000 new residents it could bring to Wing, but also for the 2900 of us who already live here. **For more details and news, see [www.stopwingnewtown.org.uk](http://www.stopwingnewtown.org.uk)**





## Dog Walking & Pet Sitting

DAY CARE & BOARDING SPACES FULL

Based in Wing, Leighton Buzzard  
**07402944770**  
 walkwithmewing@gmail.com  
 www.walkwithmewing.co.uk

★★★★★  
 5 Star Licensed by  
 Buckinghamshire Council  
 LC202205-76425





@walkwithmewing

# CAPELLI STUDIO



×


# Topcutz

---

Liscombe Park hairdressers and barbers, ready to welcome everyone into our relaxed and friendly space.


**CAPELLI STUDIO**  
Hairdressers

Michelle  
 07498 538009  
 Capellistudio

**Topcutz**  
Barbers




Tania  
 07902 835006  
 Top.cutz

~ We look forward to welcoming you ~  
 11 Media Village, Liscombe Park, Leighton Buzzard, LU7 0JL

# TOP CUTZ

## BARBER SHOP

### IMPORTANT: WE HAVE MOVED!

After 20 years in Wing High Street we are very excited to share that we have moved to a new location!

As of 2 February 2026, our Wing shop is now closed and we have relocated to Liscombe Park (new address below). We hope this change won't inconvenience our loyal customers and we hope to see you in our new home very soon!





Book your appointment via the NearCut app or alternatively call: 07902 835006



NEARCUT

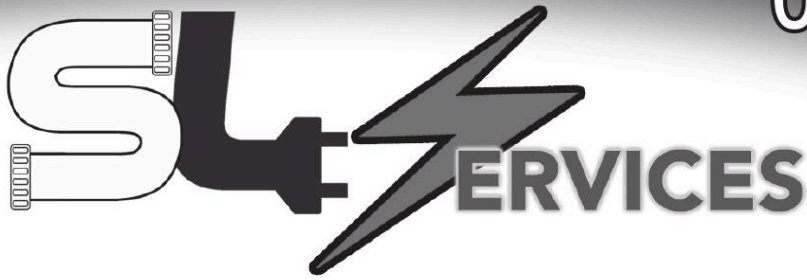
1. Download the NearCut app
2. Register with your email
3. Search "Topcutz"
4. Pick your appointment time

N.B. Don't forget to check your email for your confirmation

TopCutz, Capelli Studio, 11 Media Village, Liscombe Business Park. LU7 0JL

 @Tania Topcutz
  @top.cutz





07939 061777

## Domestic Electrical Services - Based in Wingrave

No Obligation - Free Estimates - Fully Insured

EICR, fault finding, rewires, fuse board changes, additional sockets and lighting. No job too small.

*City and Guilds Qualified*

[www.slservices.info](http://www.slservices.info)  
[slservicescontact@yahoo.co.uk](mailto:slservicescontact@yahoo.co.uk)

**City & Guilds**



### WING GARDENING CLUB

A club for anyone interested in gardening. Varied talks, demonstrations, Group garden visits and discount seed/plant scheme.

#### GEORGE LOCKWOOD

An organic and passionate gardener, George has presented talks on many gardening topics. He is making a return visit to speak about

#### Bulbs; January to May



**Tuesday 9<sup>th</sup> June 2026**

**WING VILLAGE HALL**

Small hall at rear

**7.30 for 8pm start**

More information from Christine via [winggardeningclub@hotmail.co.uk](mailto:winggardeningclub@hotmail.co.uk)

Coffees and teas available

Members: £2 Price includes a ticket for the raffle draw Non-members: £4 on door

*SaBa*

Bridal Design  
Evening Wear  
Smart Suits

Sally Barnes  
01296 688046  
[sallysababarnes@icloud.com](mailto:sallysababarnes@icloud.com)



Please ring for an appointment

# THE LITTLE IT COMPANY

Laptops, PCs, Tablet, Apple Macs, WiFi Internet, Repairs & Upgrades, FREE collection & Delivery

Experienced Tech Professional will solve all your computer/technology related problems.

**NO FIX - NO FEE GUARANTEE**

Facebook Page:  
@thelittleitc

Website:  
www.thelittleITcompany.co.uk



Make your Computer Smile - Call Mark based in Cheddington 07789 304 274



## Furry Poppins

The Practical & Perfect Pet-Sitting Solution

- **Pet Pop-ins**
- **1-on-1 Dog Walks**
- **Overnight stays**



Cats | Dogs | Horses | Rabbits  
Rodents | Reptiles | Birds

Call Kim on:  
**07919 834921**

**Loving pet care in your own home**

[furrypoppins.co.uk](http://furrypoppins.co.uk)  
email: [kim.furrypoppins@icloud.com](mailto:kim.furrypoppins@icloud.com)



## The Laser Centre



Lena Mansfield - Laser & Skin Specialist

- Acne & Scarring
- Rosacea & Thread Veins
- Pigmentation
- Anti-Ageing & Under Eye
- Laser Hair Removal
- Hair Thickening
- B12 Vitamin Injection
- Tattoo Removal



**BOOK NOW**

07921 904638

[www.thelasercentre.co.uk](http://www.thelasercentre.co.uk)

Old Manor Court, Stewkley

# Wing Parish Council News

## Good News

The Parish council are delighted to have been awarded grant funding for the installation of CCTV on the Pavilion to provide badly needed protection and security to the buildings and car park. Councillors Sunday and Gilbert attended the award ceremony in Oxford to receive the large cheque.

This was awarded by Thames Valley Community Fund, which is jointly managed by the PCC and the Chief Constable and is created from the proceeds from the sale of items, seized from criminals, that cannot be returned to their rightful owners.



## Wing Tidy Up - Just in Time for the Best Kept Village Entry!



Wing is already looking tidier following the Parish Council taking over the responsibility of cutting verges from BC. Obviously initial cuts leave more cuttings, however this will reduce as cutting is done more regularly. The hanging baskets are looking great too, so please remember to keep hedges and overhanging shrubs trimmed. Thank you!!

## Chesterfield Crescent Hits the Press!



Bucks Herald and the LBO featured an article outlining the Parish Council's green proposal for their bid regarding the recovery of this contaminated site.

## Ascott Estate Housing Plan Surgery

The Parish Council organised a drop-in session to assist villagers regarding the news of potential new housing on the Ascott Estate, which had a great turn out. Estate Manager, Robert Honan, attended in an attempt to answer queries and explain the purpose of their planned unofficial surgery/consultation.

## Wing Speed-Watch Update

ClIr Kat Daniels has now successfully trained as a Speed-Watch coordinator.



The training can be sent to all interested parties and, once we have a minimum of three people who have passed the training, we can set up locations for police approval. The equipment needed can then be requested in order for members to be trained to use it.

**We really do need as many volunteers as possible to make our village safe.**

Email: [clerk@wingparishcouncil.gov.uk](mailto:clerk@wingparishcouncil.gov.uk)

## Vandalism

Unfortunately, there has been a spate of worsening vandalism in the village. This has included the smashing up of a park bench on Jubilee Green and a noticeboard, along with graffiti, and more disruption in Long Spinney.

Sadly, the cost of these repairs comes out of public money and, so far this month, the cost to Wing has been: **£435.04.**

If you notice the result of, or witness any antisocial behaviour, please be sure to report it on the link below, as recommended by the Police:

<https://www.thamesvalley.police.uk/ro/report/asb/asb-v3/report-antisocial-behaviour>

The police need this information to be recorded to build up a complete picture, enabling them to take action etc.

Also, if you have any information regarding a crime, please contact Tina Hobson, our local PCSO on: [tina.hobson@thamesvalley-police.uk](mailto:tina.hobson@thamesvalley-police.uk) or 07779 586565.

Thank you.

**Why not be a part of all this rewarding activity on behalf of the community?**

To find out more, contact Bridget on: [clerk@wingparishcouncil.gov.uk](mailto:clerk@wingparishcouncil.gov.uk)

**Our next full Parish Council meeting - Tuesday 30 June 2026 at 7.30 in Wing Village Small Hall.**

## Parish Council Contact Information

For more information, news and updates from the Wing Parish Council, please find us on: Facebook, @wingparishcouncil, or visit our website [www.wingparish.org](http://www.wingparish.org); Instagram @wingparishcouncil; Email: [clerk@wingparishcouncil.gov.uk](mailto:clerk@wingparishcouncil.gov.uk)



# THREE COUNTIES PET DOG TRAINING

## TRAINED FOR LIFE

Trained for life is a course which is tailored for all breeds and abilities, covering basic obedience training and life skills for your pet dog.

The aim is to achieve a well balanced pet, that you are proud to take anywhere and enjoy the company of, and is a pleasure to walk on a loose lead and sociable with both humans and other dogs.

## SCENT DETECTION TRAINING

Scent detection is a great way to work and bond with dogs of all ages and breeds. Together you will learn how to ignite your dogs seeking system, every breed has this ability as they would use this to forage for food. This activity can be a fabulous activity for older, retired dogs as well as younger dogs, as it is not as physically demanding but is mentally stimulating.

## THE PET GUNDOG TRAINING

The APGI classes offered are structured and set in stages.

- Dog psychology - the way that it learns and what motivates it.
- The dog's anatomy - how this impacts on training
- Body language and how dogs communicate.
- Age-related training

Contact us for more details or to book a place on any of the courses.  
NEIL SMITH 07774 159618

### Crossword solution

	1	D	E	C	O	R	A	T	I	O	N				
6	S	R	H	O		A	U								
7	C	H	A	T	E	A	U		8	C	I	T	Y		
10	R	K	W	B		I	I		9	E					
10	I	D	E	A		11	P	L	A	T	I	N	U	M	
13	P			12	D	E	U		G	E					
13	T	E	14	A	S	E	D		15	E	R	A	S	E	R
16	U	V	J		15	G	N								G
17	R	H	O	D	E	S	I	A		18	G	L	E	E	
	E	C		C		V		20	T		I		N		
	21	R	A	F	T		22	E	L	A	S	T	I	C	
		D		E		U		B		H					
	23	N	O	M	D	E	P	L	U	M	E				

### Sudoku solution

2	1	6	5	3	9	4	7	8
7	4	5	8	6	1	3	2	9
9	8	3	7	2	4	1	5	6
8	6	9	4	7	3	5	1	2
3	5	4	1	9	2	6	8	7
1	2	7	6	8	5	9	3	4
6	9	1	2	5	7	8	4	3
5	7	8	3	4	6	2	9	1
4	3	2	9	1	8	7	6	5

### Codeword solution

13	G		25	D		8	J		26	B		5	P		5	P		4	F							
16	T	U	21	X	10	E	25	D	14	O		18	U	5	P	2	H	10	7	A	1	7	A	15	L	
	7	A		12	C		19	Y		16	T		7	A		9	S		16	I		3	M			
	5	P	6	R	14	O	15	L	22	I	4	F	22	13	C		6	R	18	9	U	16	22	12	C	
		25	D		7	A		18	U		2	H		22	I					25	N					
	25	D	22	9	S	9	S	14	O	15	L	V	10	E		9	S	7	A	12	2	10	16	T		
		7	A		9	S		6	R		10	E		14	O											
	7	A	23	16	T	I	20	18	10	E		3	M	10	7	A	23	25	10	6	R					
			4	F		23	N			9	S		8	J							21	X				
	10	23	11	Z	19	Y	3	10	E		7	A	15	4	6	10	9	12	14	O						
		10	E				23	N		6	R		15	L		12	C		2	H						
	18	5	P	17	W	24	10	E	23	N	25	D	12	C	15	7	A	5	P	16	6	7	A	5	P	
		2	H		23	N		22	I		7	A		23	N	18	U		23	N						
	17	10	E	10	E	24	10	E	23	N	25	D	9	S		13	G	7	A	6	7	A	13	G	10	E
		17	W		19	Y		13	G		3	M		10	E		10	E		10	E					

**Rachel Harris** Professional Tutoring Ltd

**LIMITED SPACES**

**11+ tuition** Year 4 and Year 5 classes available  
 Saturday mornings, Great Missenden  
 Monday afternoons, Stoke Mandeville  
 Tuesday afternoons, Wing

Fully qualified and experienced teacher

- Maths
- English
- Verbal Reasoning
- Non-verbal Reasoning
- Strong focus on exam technique
- Weekly homework
- Regular Assessments
- Realistic mock exams
- Half-termly reports

**£19.50 per lesson**

- Small group 11 Plus Tuition
- 11 Plus Mock Exams
- Vocabulary Booster Workshops
- Year 7 Transition Workshops

**CONTACT US** Now taking bookings for 2024 / 2025  
[hello@rachelharrisprofessional tutoring.co.uk](mailto:hello@rachelharrisprofessional tutoring.co.uk)

## Why Choose Raw Feeding?

Raw food promotes optimal health for dogs and cats. Choosing to feed your pets a raw food diet can help to:

- Support overall health
- Support digestive health
- Reduce waste (poop)
- Support oral health and hygiene
- Support coat and skin health
- Reduce allergies and intolerances
- Support bone and joint health
- Support energy levels
- Encourage food enjoyment
- Encourage ideal nature and behaviour



Nutriment Limited are wholeheartedly dedicated to raw feeding and the principles of Biologically Appropriate Raw Food (BARF). Providing a complete, nutritious raw diet, which is easily digested, is the best way to promote ideal health and happiness for your pets.

It contains 100% human-grade quality raw meat and fish, is committed to a grain-free and low carbohydrate approach to recipes with superfoods to enhance the nutritional profile of their recipes.

[www.nutriment.co.uk](http://www.nutriment.co.uk)



Age, breed, or size – it doesn't matter!  
 Raw food is the key to a healthy, happy life for all cats and dogs!

As your local stockist we offer a free local delivery service.  
 Please contact us for further information or to place an order.  
 Nuts about Muts - 07973 299656.

# Claydon Auctioneers

**Auctioneers of:**

Antiques, Collectables, Silver, Jewellery, Watches, Paintings & Prints, Furniture, Clocks, Militaria, General Goods & Chattels, etc.

Free auction valuations available, Partial & total house clearance service, Insurance, probate & family division valuations

**Auctions every month**  
 Visit our website for more details

Auctioneers: Louise Gostelow  
 Robin Ealey Jamieson

Contact: 01296 714434  
[info@claydonauctioneers.com](mailto:info@claydonauctioneers.com)  
[www.claydonauctioneers.com](http://www.claydonauctioneers.com)

Claydon Auctioneers Ltd.  
 The Claydon Saleroom,  
 Calvert Road, Middle Claydon,  
 Buckinghamshire, MK18 2EZ

## 'LET'S PUT IT STRAIGHT' HANDYMAN SERVICES

**LOCAL MAINTENANCE MAN WITH 45 YEARS EXPERIENCE**

**SMALL JOBS ~ INDOORS & OUTDOORS**

**FULLY INSURED**

**CALL STEVE FOR A QUOTATION OR ADVICE**

**07925 186416**

**GRASS CUTTING ~ STRIMMING ~ SHRUB & HEDGE PRUNING ~ FENCE PAINTING**

**PATIO CLEANING ~ DRIVEWAY WEEDING**

**SMALL REPAIRS ~ PICTURE FRAME HANGING ~ SHELVEING**

**FURNITURE ASSEMBLY ~ GRAVE PLOT MAINTENANCE ~ WOODWORKS**

**REPLACEMENT LOCKS & HINGES ~ GENERAL PROPERTY MAINTENANCE**



# AYLESBURY VALE CHIROPRACTIC

EXPERTS IN MOTION

Professional Chiropractic  
Treatment and  
Massage Therapy

**\*Now also offering\***

Neuro Physiotherapy  
Clinical Psychology  
Contact us for more  
information



[www.avcclinic.co.uk](http://www.avcclinic.co.uk)

[info@avcclinic.co.uk](mailto:info@avcclinic.co.uk)

Unit 9 Media Village  
Liscombe Park  
LU7 0JL  
01296 846981

# Phil Lee Heating Services

Local Wing-based  
British Gas trained  
and experienced heating  
engineer.

All types of central heating  
work undertaken.

Boiler servicing

Landlord's  
inspections

Repairs

Fault-finding

Power flushing

Installations

System alterations and  
improvements

Minor plumbing works

Fully insured

-----  
Call now

07834 718103 /  
07787 505742



649549

# Gardener's Diary

By Ginny Hollas,  
Wing Gardening  
Club



It has always been called 'Glorious June', when roses burst into bloom and the nightingales begin to sing but, in my garden, the first rose appeared at the end of April. It is so noticeable in the garden how the climate is warming, but this encourages us to put out the tender plants too early and get caught by sharp night frost. My young tomato plants were growing well in the unheated greenhouse, but the few very cold nights we had at the beginning of May shocked them and they have been slow to recover. Roses give so much pleasure and, with modern repeat flowering varieties, they flower for weeks provided they are dead headed. One of my favourites is Gertrude Jekyll, a rose introduced by David Austin over 30 years ago.

## ROSES - Origins, Myths and Legends

Roses are one of the oldest garden plants and fossil evidence has been found in Europe estimated to be between 33 and 35 million years old. These were open blooms with four petals and big colourful hips. I have a single rose similar to the ancient species which I grow for pollinators, as many modern roses have blooms too compact for insects to get to the pollen. Roses prefer a temperate climate. I have tried to grow them in warm countries without much success, as they made very spindly weak plants.



Throughout history, the rose has been portrayed in art and poetry, symbolising love and beauty. In Greek mythology it was always associated with love, still retaining this tradition to this day. Chloris, the goddess of flowers, is said to have created the rose after turning the lifeless body of her favourite nymph into the most beautiful flower in the land. Dionysus gave it fragrance and Aphrodite loved it so much that she named her son after it - Eros the god of love - she just rearranged the letters. He then gave a rose to Harpocrates, the god of silence. This mythology continued into Roman times, where silence became discretion and their council chambers were festooned with rose blossoms to keep all proceedings confidential - hence the term, *sub rosa* (under the rose).

## Cultivation

The Chinese were cultivating roses around 3,000BC. They were grown, not only for ornamentation but for medicine and making perfume. They grew yellow blooms, unknown elsewhere, in the Imperial gardens. The Egyptians loved the scent of roses and bathed in rosewater. Roses were introduced to Britain by the Romans and hybridisation continued from that time.

Empress Josephine of France made, at Chateau Malmaison, a renowned rose garden which contained 250 new species, pioneering methods of cross pollination and recorded in the famous paintings of Redoute.



## Looking After the Roses in your Garden

All of us grow roses, as they are robust and in the main very forgiving and easy to grow. It is cheaper to buy bare-rooted plants in the late autumn and early spring, but container plants can be planted at any time. Make sure you plant at the same level as in the union (the bumpy stem joining the root stock to the graft), level with soil and not buried. Always add some compost, manure or general fertiliser to give the plant a good start. Water it in well and then water at least once a week if the weather is dry, until the plant is established. Thereafter, apart from a trim to keep growth to the level you want, your roses will look after themselves. Pruning is not an art, they will recover even if attacked with a hedge trimmer as they do in municipal gardens. Roses produce prolific growth in a season so make sure you feed them well in early spring and after the first flush of flowers has finished in early summer.

The biggest bugbear is black spot on the leaves, causing them to turn yellow and fall off. You can treat it with a fungicide, but that is not good for our diminishing insect population. Plant hygiene helps, picking off affected leaves and not leaving them on the plant or ground below will contain it. It is always worse in wet weather. Some advocate spraying with a milk solution, but I have not yet tried that. Keep young plants in good health with strong growth.

Our next speaker is George Lockwood on bulbs. For further information e-mail [winggardeningclub@hotmail.com](mailto:winggardeningclub@hotmail.com)





# IKEBANA

Japanese Flower Arrangement

A Demonstration by  
**Ruriko Kojima**

Thursday 18th June 2026  
7:30 - 10pm  
Wing Small Hall

Competition: flower arrangement  
in a teacup (no floral foam)



Would you like someone to call for you and take you to the meeting?  
If so, or for more information, please contact:

President: Christine Mardlin  
01296 688331

Secretary: Pat Jones  
01296 682362  
[pat.jones@talk21.com](mailto:pat.jones@talk21.com)

Wing Gardening Club meets on the second Tuesday of the month in Wing Village Hall. For further information e-mail [winggardeningclub@hotmail.co.uk](mailto:winggardeningclub@hotmail.co.uk)

# WEAVERS

**SMART, SAFE AND PRACTICAL BAGS FOR MOBILE PHONES OR GLASSES**

**WEAVERS** (price £10 each) are made from sturdy dark blue denim and lined with brightly coloured fabric from which the "across the shoulder" strap is made. A hand-made woven braid decorates the the flap covering the Velcro fastening. A pocket on the back of the bag stores the strap when not in use.



Choose from a variety of colours, or have your own fabric incorporated into the weave.

Proceeds from **WEAVERS** are divided between **All Saints Church, Wing** and **the Motor Neurone Disease Assn.**

Made by Sally Barnes in Wing  
Contact: 01296 688046  
[sallysababarnes@icloud.com](mailto:sallysababarnes@icloud.com)

 Find us on Facebook



est. 1980  
**ACORN FARM**  
BUSINESS CENTRE

## UNIT LETS AND SELF STORAGE

OFFICE AND INDUSTRIAL UNIT LETS  
SELF STORAGE CONTAINERS  
COUNTRYSIDE LOCATION

### CONTACT FOR MORE INFO

07831 879680

[CONTACT@ACORNFARMLETS.CO.UK](mailto:CONTACT@ACORNFARMLETS.CO.UK)

ACORN FARM BUSINESS CENTRE  
CUBLINGTON ROAD, WING, LU7 0LB

[WWW.ACORNFARMBUSINESSCENTRE.CO.UK](http://WWW.ACORNFARMBUSINESSCENTRE.CO.UK)

# VASS-TECH

**Volkswagen - Audi - Seat - Skoda Specialists**



**Audi**



**ŠKODA**

**Save up to 50% on your main dealer prices**

**Audi qualified & licensed technicians with over 54 years combined experience**

**Diagnostic repairs with the latest equipment**

**All servicing & mechanical repairs carried out to the highest standards including brakes, clutches, cambelts, etc**

**Complimentary courtesy car subject to availability**

**MOTs, Tyres, wheel alignment 'ADAS' ready and puncture repairs**



[www.vass-tech.co.uk](http://www.vass-tech.co.uk)

T: 01296 641429 E: [info@vass-tech.co.uk](mailto:info@vass-tech.co.uk)

5A High Street, Whitchurch, Buckinghamshire, HP22 4JU



## Reporting from Boughton Woods

Children from Years 4 and 5 recently returned from an unforgettable residential trip to Boughton Woods, where they enjoyed an exciting bushcraft adventure packed with teamwork, outdoor learning and plenty of fun.

During their stay, the children slept in traditional bell tents with their friends in the heart of the woodland, fully immersing themselves in nature. During the day, they were divided into three tribes and worked together to tackle a range of practical challenges and activities. The pupils learnt how to build shelters using natural materials, which were then put to the test when the camp leader poured water over



them — with the children safely inside! There were certainly a few soggy smiles afterwards. The children also practised fire-lighting techniques and enjoyed camouflage games among the trees.

One of the highlights of the trip was the wilderness first aid training. The children were introduced to DRABS — Danger, Response, Airway, Breathing and Secondary Survey — and learnt why these steps are so important in an emergency. They then took part in a realistic SOS scenario in the woods, discovering a ‘crashed aircraft’ and putting their newly acquired first aid skills into action when they came across ‘injured casualties’. Staff were incredibly impressed by the children’s calm approach and problem-solving skills which included carrying the ‘casualties’ on make-shift stretchers.



The fun continued with ‘Tribes Got Talent’, where the children entertained one another with a variety of performances, as well as learning the patience and concentration needed to make bracelets using paracord.

The residential trip provided a wonderful opportunity for the children to step outside their comfort zones, build friendships and develop their independence. Although there were many tired faces on the journey home, the trip was filled with laughter, adventure and memories that will stay with the children for many years to come.



**For all your Pest Solutions**  
(covering London, Herts, Beds and Bucks)

**Call Peter: 07958 669 706 or 01525 220 653**

**Email: [peter@nimbypest.org.uk](mailto:peter@nimbypest.org.uk)**

**[www.nimbypest.org.uk](http://www.nimbypest.org.uk)**

Wasps | Rats | Mice | Squirrels | Rabbits | All Flying & Crawling Insects |  
Glis Glis| Moles |



National Pest Technicians Association



# WHAT'S ON at WING HALL REGULAR ACTIVITIES



<b>MONDAY</b>	Rainbows & Brownies		Small Hall	1730-1830	Carolyn Saunders	01296 688508
	Tai Chi		Large Hall	1100-1200	Norma Collins norma.tai.chi@hotmail.co.uk	07947 672069
All except 1 <sup>st</sup> in month	Badminton Club		Large Hall	1900-2300	Gary Stevens	07769 074570
1 <sup>st</sup> in month	Bingo		Large Hall	1930 start	Christine Stray	07896 666498
	Library			1400-1630		
<b>TUESDAY</b>	Dance Class (adults)		Large Hall	1000-1300	Adrian Marsh	07906 988880
3 <sup>rd</sup> in month	Pop-In (Age Concern)		Small Hall	1345-1545	Janet Ratcliffe	01296 720946
Term time only	Street Dance		Large Hall	1530-1830	Kiri Fitzgerald	07988 161043
2 <sup>nd</sup> in month	Gardening Club		Small Hall	1930-2130	winggardeningclub@hotmail.co.uk	
	Badminton Club		Large Hall	1900-2300	Gary Stevens	07769 074570
Last in month	Parish Council Meeting		Small Hall	1930-2200	clerk@wingparishcouncil.gov.uk	
Term time only	11+ tuition for years 4 & 5		The Snug	1705-1915	Rachel Harris hello@rachelharrisprofessional tutoring.co.uk	
1 <sup>st</sup> , 3 <sup>rd</sup> of month	Table Tennis		Small Hall	1830-2300	Zita Pascoe leightonbuzzardttc@gmail.com	07517 018889
	Library			1400-1630		
<b>WEDNESDAY</b>						
1 <sup>st</sup> in month	U3A Art Appreciation		Small Hall	1400-1600	Bobbie Ward	01296 681982
Fortnightly	Lunch Club (over 60s)		Small Hall	1200-1400	Sue Nightingale	01296 682999
	Dance Class (adults)		Large Hall	1830-2200	Adrian Marsh	07906 988880
	Table Tennis		Small Hall	1830-2300	Zita Pascoe leightonbuzzardttc@gmail.com	07517 018889
	Library			1000-1230		
<b>THURSDAY</b>	Tots Bop		Large Hall	0930-1200	Rachel Kenning	01525 237474
Term time only	Lacemaking		Small Hall	0930-1130	Bobbie Long	01296 624179
	Yoga		Large Hall	1900-2000	Kim O'Hanlon	07770 450788
1 <sup>st</sup> , 2 <sup>nd</sup> , 4 <sup>th</sup> each month	Table Tennis		Small Hall	1830-2300	Zita Pascoe leightonbuzzardttc@gmail.com	07517 018889
3 <sup>rd</sup> each month	Wing WI		Small Hall	1900-2200	Val Fielder	01296 688044
<b>FRIDAY</b>	Line Dancing		Large Hall	1045-1400	Adrian Marsh	07906 988880
	Library			1400-1630		
	Table Tennis		Both Halls	1830-2300	Zita Pascoe leightonbuzzardttc@gmail.com	07517 018889
<b>SATURDAY</b>	Library			1000-1230		
<b>SUNDAY</b>	Wing Singers		Large Hall	1645-1915	Angie Varey wingsingers@yahoo.co.uk	07908 653006
Any day	Snooker Club				David Turner	07392 482415

Hall rental charges are in a separate notice in this issue.

## CONTACTS

### Regular bookings

Sheila Lambert: 07503 188418  
sjlambert49@gmail.com

### One-off bookings (parties, weddings etc)

Stephen Payne: 07555 722315  
stephenpayne3@hotmail.co.uk



The  
**SNUG**

www.winghall.org

Wing Village Hall

## WING HALL TRUST

71 Leighton Road, Wing, Leighton Buzzard,  
Beds LU7 0NN

Registered with the  
Charity Commission No 212601

# OUT&ABOUT



Walk and photos by  
Arthur Jones

Approx 12 or 2.5 hrs, 4.25 or 4.75  
miles (6.84 or 7.64 km)

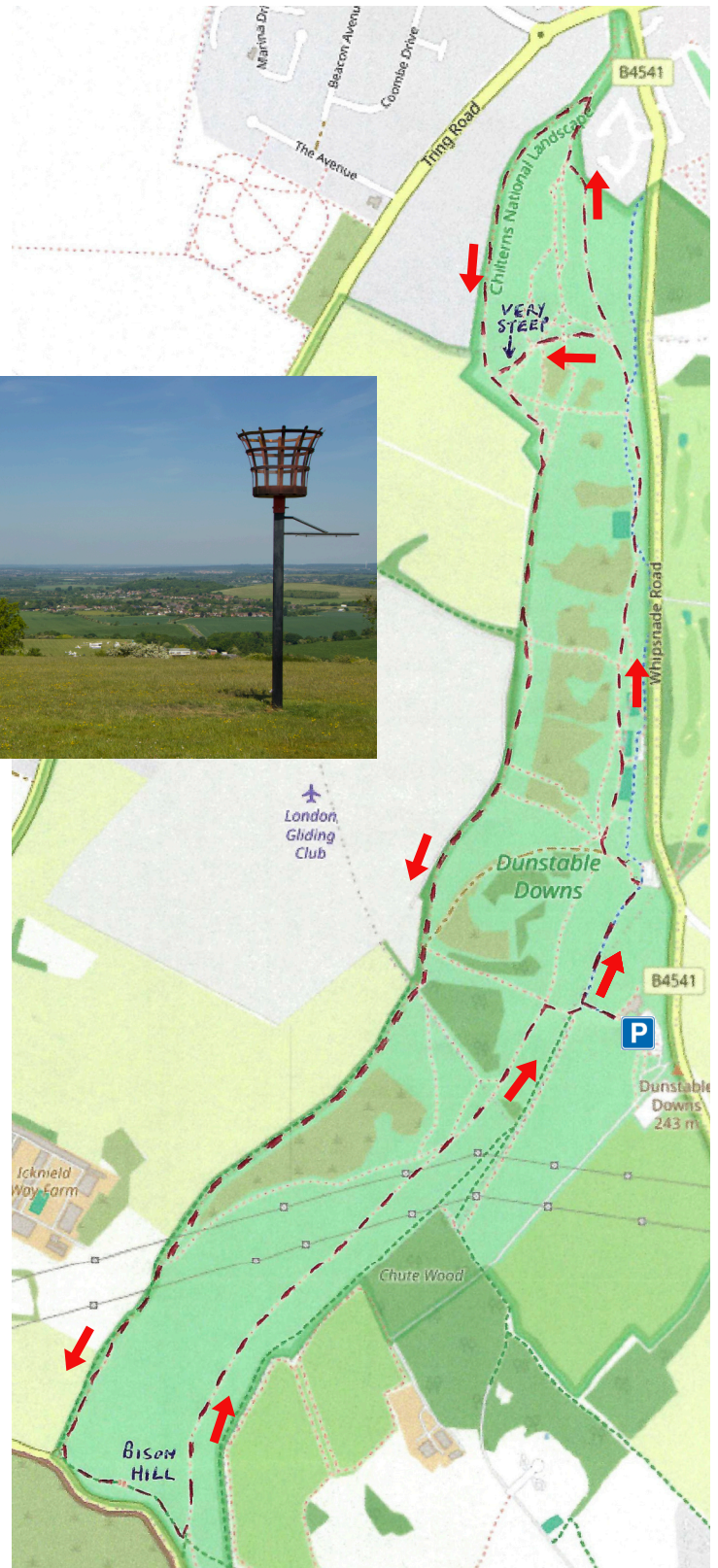
Map: © OpenStreetMap contributors  
(OS Explorer: 181 & 193)  
streetmap.co.uk will enable you to  
print a map with footpaths and field  
boundaries.



## Dunstable Downs Circular

This a great walk along the top of the Downs and in the valley below,  
that offers magnificent views across Aylesbury Vale.

- ▶ Start from the car park at the NT Visitor Centre (parking free for NT members).
- ▶ Walk past the visitor centre towards the metal artwork obelisk down the hill, turn right on the footpath and head towards the Five Knolls in the distance.
- ▶ On reaching the Knolls the footpath splits, with one path on the left onto the Knolls (the shorter route) and the main footpath going straight on past the Knolls.
- ▶ Shorter route: continue along the wide footpath to the summit of the Knolls, where there are fine views across the Vale of Aylesbury. Then, facing West, carefully make your way down the very steep slope (walking poles recommended) which has some steps cut into the side of the hill, until reaching the path at the foot of the Downs. Turn left.
- ▶ Longer route: continue along the wide footpath downhill and past the Knolls. The path becomes a narrower dirt track. Follow this until reaching a wide track ahead. Turn right onto this track and, after 100 yards, turn sharp left just past the first tree onto the footpath with red arrow sign. Follow this path through a wood until it emerges into an open area with the Knolls on the left, where it meets footpaths coming down from the Knolls.
- ▶ Continue along this path through open areas and scrubland for about one mile, keeping the gliding club to your right. Just before a gate leading into a grazing field, the path veers right and then left and becomes a wider path with hedgerows on each side.
- ▶ Continue until almost reaching the B4540 road leading up to Whipnade. The path turns left and continues up Bison Hill. This is a steep climb, but steps have been cut into the hill to facilitate the ascent.
- ▶ At the top of Bison Hill follow the bridleway to the left through a large field, scrubland and open pasture back to the visitor centre.



# WANTED

WE ARE LOOKING TO BUY:

OLD BROWN FURNITURE

TABLES & CHAIRS

CHEST OF DRAWERS

SILVER ITEMS SILVER PLATE

OLD FASHIONED FURNITURE

CUTLERY + CHINA

1950's 60' 70' ITEMS

OLD PRINTS & PAINTINGS

ART DECO ERCOL

ADVERTISING ITEMS

DESKS & BUREAUS

JEWELLERY (even damaged)

BRASS & COPPER

MILITARIA & OLD WEAPONS

MEDALS (collections bought)

CHESTERFIELD SOFAS

CLASSIC CARS

METAL FURNITURE

OLD TRUNKS & BOXES

ENAMEL SIGNS

TAXIDERMY

OLD LUGGAGE

SPORTING ITEMS

VASES + GLASS WARE

ROYAL DOULTON

PINE FURNITURE

LAMPS + FIGURES

OLD TOYS & GAMES

CLOCKS + OLD WATCHES

ORIENTAL CHINA

MUSIC BOXES

GRANDFATHER CLOCKS

OLD SEWING MACHINES

*Single items or full house garage & outbuilding clearance*

*We offer no obligation advice if you are selling*

**FAIR PRICES PAID - PROMPT AND FRIENDLY SERVICE**

**BARRY COTGRAVE ANTIQUES**

**LEIGHTON BUZZARD**

**bcotgrave@aol.com**

**07767 495851**

**01525 372244**

**BUYING TODAY**

**BUYING TODAY**



# Seasonal Recipe

by Margaret Redler

## Eton Mess

I'm thinking about strawberries, which is very easy for recipes as you really don't need to do much to them. There was a time when I carefully washed them (mistake - they just need a gentle wipe with damp kitchen paper) hulled and cut them. Currently we each have a small container of caster sugar and a separate one of cream or crème fresh. Dip as desired, discard the stem and enjoy the succulent flesh. There is one dish that does the delicious strawberry justice...the magnificent Eton Mess.

### Ingredients

Quantities can be variable so just for guidance:

800g strawberries, hulled and cut into bite-sized pieces.  
2tbsp icing sugar (or caster sugar if you don't have any)  
5 readymade meringue nests or homemade meringues

Meringues:  
2 large egg whites  
120g/5oz caster sugar  
¼ tsp vanilla extract

### Method

To make the meringues, preheat the oven to 110 °C/100°C fan, gas ¼.

Line a baking sheet with nonstick baking paper. Whisk the egg whites in a very clean large bowl until stiff. Whisk in the sugar a bit at a time until the mixture will hold in stiff peaks. Add the vanilla and whisk briefly.

Place five or six large dollops of the mixture onto the baking sheet. Bake for one hour and the meringues should peel away from the paper easily. Once cool, they can be stored in an airtight container for about three days.

Whip the cream with the icing sugar until it holds its shape.

To assemble, crumble four of the meringues and add to the cream with the strawberries. Fold in gently, serve and sprinkle the final meringue, crushed, on top.

There is a current fashion for adding blueberries which is fine, but I do prefer mine 'straight'.

Enjoy - hopefully sitting in the sun or watching your favourite winning at Wimbledon!



### Send us your favourite recipe!

We know there are enthusiastic and capable cooks in Wing, so if you are one, please send us a recipe that we can use. It doesn't have to be 'seasonal' as favourites are always going to be welcome! Send your recipe to: [editorial@whatsoninwing.info](mailto:editorial@whatsoninwing.info)

*I've just launched my*  
**Tropic business**

Shop with me & discover freshly made, natural skincare



**TROPIC**

**TROPIC**

**Chloe Gisborne**  
**Tropic Ambassador**




**Socials...**





Chloe's Tropic Glow

chloestropicglow

<https://tropicskincare.com/chloegisborne>



**Scan To Shop!**

## REQUIRE A VENUE FOR YOUR EVENT??

# WING VILLAGE HALL

could provide the ideal setting whether it's a formal meeting, dancing, big or small celebration, a child's party, club or exercise class.



### Our superb range of facilities include :

	Wing residents/hr	Non Wing Residents/hr
LARGE HALL	£19.00	£28.00
SMALL HALL	£14.00	£21.00
THE SNUG	£11.00	£15.00
LIBRARY	£14.00	£21.00

**All bookings include use of well-equipped kitchen, furniture, PA system if required.**

**Special wedding rates on request**



### To make your reservation:

e-mail: [stephenpayne3@hotmail.co.uk](mailto:stephenpayne3@hotmail.co.uk)

mobile: 07555 722315 [www.winghall.org](http://www.winghall.org)

Facebook : Wing Village Hall

Free wi-fi throughout premises

# Babysitters



The following young people\* have offered to babysit:

Name	Born	Contact
Tilly Forrest	Dec 2007	07854 918457
Jemima Pye	Jan 2008	07840 944111
Emma Wrighton-Ward	May 2008	07877 198591
Ava Stevens	Oct 2009	07908 739798

\* The inclusion of a name on this list is neither a recommendation nor an endorsement by the What's On in Wing team.

—/—

**N.B. If you would like your name included on this list, please email [editorial@whatsoninwing.info](mailto:editorial@whatsoninwing.info) with the same information shown above (please only do this with the approval of your parent or guardian).**

## 'Where's This?' ... the Winner

The first person to respond to the 'Where's This?' photo on p29 of the last issue of *What's On* was Dr Bryn Blake, who also happens to be one of our regular distributors.



Bryn correctly identified the house as Ivy Cottage, High Street, Burcott. Well done Bryn!

## Where are the Defibrillators in Wing?

Location	Availability	Contact
Community Lounge, 100 Wantage Crescent	24 hours	
Wing Hall	24 hours	
Ashcroft Surgery	Surgery hours	Reception
Wing Surgery	Surgery Hours	Reception
Overstone School	School hours	Reception, otherwise 999 for gate code
Cottesloe School	School hours	Reception



Wing Hall  
71 Leighton Road  
Wing  
LU7 0NN

Where Stories Live and Community Grows - Welcome to Your Library



### Opening Times

Monday	1400 - 1630
Tuesday	1400 - 1630
Wednesday	1000 - 1230
Thursday	CLOSED
Friday	1400 - 1630
Saturday	1000 - 1230

Operated by a dedicated team of volunteers, we provide full access to the Buckinghamshire Libraries service. A friendly and welcoming atmosphere awaits you, and we invite you to visit and explore the resources and support available. We are conveniently located next to the Village Hall with plenty of free parking outside and nearby.

\* Look out for our special events \*

**BOOKS:** Children's board, picture, chapter, and non-fiction. Teen, Biography, Large Print, Adult Fiction, Non-fiction, Audio.

**OFFICE SERVICES:** Photocopying, Printing, Internet, Scanning, Laminating, Shredding. **LOCAL:** Information and Displays.

**LEGO + GAMES WE COLLECT:** Used stamps and small coins.

Go to <https://www.buckinghamshire.gov.uk/libraries/> to gain access to the library catalogue and FREE digital resources. Find us on Facebook: [wingcommunitylibrary](https://www.facebook.com/wingcommunitylibrary)

## SURGERIES

Ashcroft Surgery  
01296 688201

<https://www.ashcroft-surgery.co.uk>

Surgery: Mon-Fri 0800-1200; 1400-1830  
Dispensary: Mon-Fri 0900-1200; 1400-1830  
(Telephone line remains open during lunch break)

3W Health (Wing Surgery)  
01296 711150

<https://3whealth.co.uk>

Surgery: Mon-Fri 0800-1300; 1400-1830  
Dispensary: Mon-Fri 0830-1300; 1400-1830

**Out of Hours: 111 (999 for emergencies)**

## BIN COLLECTION IN WING

Wednesday 3 June Garden, Food, Recycling	
Wednesday 10 June Food, Waste	
Wednesday 17 June Garden, Food, Recycling	
Wednesday 24 June Food, Waste	

## YOUR STARS

for **June** by Maggy La Grenouille, MBE

**GEMINI** May 21-Jun 20 Watch out for a major development coming your way. Although, you may not like it.

**CANCER** Jun 21-Jul 22 Things will start building up for you soon. Get ready. You'll need to move fast.

**LEO** Jul 23-Aug 22 Big plans are afoot. Get ready for new horizons, especially to the west. Actually, everywhere.

**VIRGO** Aug 23-Sep 22 You may find certain of your views will change, not necessarily for the better.

**LIBRA** Sep 23-Oct 22 Enigma transects Rapsallion this month. Which means everything is just doozy.

**SCORPIO** Oct 23-Nov 21 You've been thinking of a home makeover. Prepare for a complete transformation.

**SAGITTARIUS** Nov 22-Dec 21 It's tough, but you need to learn that some folk who used to care about you - well, they don't any more. That's life.

**CAPRICORN** Dec 22-Jan 19 You feel like a lonely, helpless voice. But you're not. Pull yourself together. Socks up. Yell.

**AQUARIUS** Jan 20-Feb 18 You'll dream about the flight of a frightened barn owl. Stop eating late-night cheese sandwiches.

**PISCES** Feb 19-Mar 20 Feeling bulldozed and steamrollered? Try being more constructive.

**ARIES** Mar 21-Apr 19 It's reasonable to expect life to start becoming a little more concrete.

**TAURUS** Apr 20-May 20 You'll need a bit more application, if you want to strengthen your foundations.



# HOW TO ADVERTISE IN WHAT'S ON IN WING

## IN PRINT and ON-LINE!

What's On in Wing is published once a month. 1,400 copies are delivered to households, shops, pubs and public buildings in the parish of Wing, and public buildings in neighbouring parishes. It's also available on-line at: [whatsoninwing.info](http://whatsoninwing.info).

### Advertising Rates

What's On in Wing has always represented great value for money. Our advertising rates reflect our wide circulation, colour printing and the inclusion of the on-line version (which in fact gives your advertising global reach). The on-line version of your ad links directly to your own website, at no extra cost.

### Sponsor an Issue of What's On!

Sponsor an issue of What's On in Wing for just £95, and get a half page of editorial and photographic coverage of your business, as well as a whole page advertisement, and banner promotion of your company name on that issue's front cover and every spread! Email [advertising@whatsoninwing.info](mailto:advertising@whatsoninwing.info) for details.

Size	Width mm	Depth mm	Price	Parish advertiser
Whole page	195	270	£35.00	<b>£30.00</b>
Half page landscape	195	134	£20.00	<b>£18.00</b>
Half page portrait	95	270	£20.00	<b>£18.00</b>
Quarter page	95	134	£15.00	<b>£12.00</b>
Eighth page	95	66	£10.00	<b>£8.00</b>
Inside front cover	195	270	£40	<b>£35</b>
Outside back cover	195	270	£45	<b>£40</b>
10% series discount for 12 ads				



Printed by JAM Print Design & Printing Ltd  
([www.jamprint.co.uk](http://www.jamprint.co.uk) Tel: 01249 823950)

## HOW TO CONTACT WHAT'S ON IN WING

### Advertising

For advertising enquiries and bookings, contact Jacqui Wakefield at: [advertising@whatsoninwing.info](mailto:advertising@whatsoninwing.info)

**The absolute deadline for reserving or cancelling advertising space is noon on the 5<sup>th</sup> of the month preceding publication.** Please supply your advertising artwork by email to Jacqui - as a .jpg file - and to the sizes shown in the adjacent table. We cannot accept any other kind of artwork.

### Editorial and News

To submit editorial or photographic material, contact Lance Redler at: [editorial@whatsoninwing.info](mailto:editorial@whatsoninwing.info)

**The absolute deadline for all advertising and editorial content is noon on the 15<sup>th</sup> of the month preceding publication.** Credit or refunds cannot be applied when artwork is provided after the deadline. Unfulfilled bookings will be charged at cost.

### Accounts

For payments or accounts, contact Carmen James at: [accounts@whatsoninwing.info](mailto:accounts@whatsoninwing.info)

### Distribution, Other Enquiries

The distribution of copies to dwellings etc is coordinated by Gail Trew: [gail.trew@btinternet.com](mailto:gail.trew@btinternet.com). General enquiries can be addressed to [admin@whatsoninwing.info](mailto:admin@whatsoninwing.info).

### Advertising and Editorial Policy

The views and opinions expressed in editorial contributions do not necessarily reflect the views of the publishers of What's On in Wing, nor does the inclusion of any advertisement or news item represent endorsement by the publishers. We are neutral and impartial, but we reserve the right to edit material to fit the available space, or to decline publication of material, at our discretion.

What's On in Wing is published monthly by What's On Publishing CIC, 12 Overstone Close, Wing, Leighton Buzzard, England, LU7 0TE. Registered number 14178082.

# LISCOMBE

## DYNAMIC REFORMER



### LISCOMBE

HEALTH CLUB



ENQUIRE NOW | 01296 682281  
[WWW.LISCOMBEHEALTHCLUB.CO.UK](http://WWW.LISCOMBEHEALTHCLUB.CO.UK)

